

The IB Diploma Programme statistical bulletin



May 2009
examination session

The IB Diploma Programme statistical bulletin, May 2009 examination session

Published in November 2009

International Baccalaureate
Peterson House, Malthouse Avenue, Cardiff Gate
Cardiff, Wales CF23 8GL
United Kingdom
Phone: + 44 29 2954 7777
Fax: + 44 29 2054 7778
Website: www.ibo.org

© International Baccalaureate Organization 2009

Statistical queries should be directed to the
Management Information Coordinator:

Phone: +44 29 2054 7657
Fax: +44 29 2054 7778
Email: statistics@ibo.org

Contents

Tables and graphs		Page
Index: key to abbreviations		4
PART A: general school statistics		5–7
1	Number of schools following the Diploma Programme 2005–2009	5
2	Number and percentage of schools following the Diploma Programme by working language 2005–2009	6
3	Number and percentage of schools following the Diploma Programme by IB region 2005–2009	7
PART B: registration statistics		8–27
4	Number of schools registering candidates May 2005–May 2009	8
5	Number of May session schools registering candidates May 2005–May 2009	8
6	Number of schools registering candidates by working language May 2005–May 2009	9
7	Number and percentage of schools registering candidates by IB region May 2005–May 2009	10
8	Number of candidates registered by category May 2005–May 2009	11
9	Number of candidates registered by gender May 2005–May 2009	13
10	Number of candidates registered by IB region May 2005–May 2009	14
11	Number of candidates registered by category, gender and IB region May 2009	15
12	Summary of Diploma Programme examination entries: schools with registered candidates May 1975–May 2009	16
13	Number of schools that registered a particular number of candidates May 2005–May 2009	18
14	Subject registration summary May 2009	19
15	Subject group registrations May 2005–May 2009	19
16	Additional Diploma Programme requirements: extended essay and theory of knowledge May 2009	20
17	Subject registration summary: extended essay by subject group May 2009	20
18	Subject registration summary: theory of knowledge by language May 2009	21
19	Nationalities of candidates registered May 2009	22

20	Number of countries represented by examination session May 2005–May 2009	25
21	Number of candidates registered by country May 2009	26
PART C: results statistics		28–42
22	Analysis of examination results by subject and level May 2009	28
23	Diploma and retake candidates (D+R): distribution of points totals May 2009	36
24	Retake candidates only (R): distribution of points totals May 2009	37
25	Diploma score distribution: diploma and retake candidates (D+R) and retake candidates only (R) May 2009	38
26	Extended essay results May 2009	39
27	Theory of knowledge results May 2009	40
28	Distribution of additional points May 2005–May 2009	41
29	Mean points score worldwide May 2005–May 2009	42
30	Mean grade worldwide May 2005–May 2009	42
31	Pass rate worldwide May 2005–May 2009	43
32	Number of diplomas and bilingual diplomas awarded May 2005–May 2009	43
33	Number of diplomas awarded by IB region May 2009	43
34	Number of candidates scoring 45 points May 1999-May 2009	43
35	Number of candidates scoring 45 points by IB region May 1999-May 2009	44
36	Number of candidates scoring 45 points by IB gender May 1999-May 2009	44

Index: key to abbreviations

Categories of registration

Diploma Programme candidates must register in one of four categories. These are identified by one of the following letters.

- D** **Diploma:** candidates intending to complete the requirements for the award of an IB diploma.
- R** **Retake:** previous IB diploma candidates who are seeking to improve their results. The highest grade obtained for a subject will contribute towards the IB diploma.
- C** **Certificate:** candidates taking one or more subjects who are not seeking the award of the IB diploma.
- A** **Anticipated:** candidates intending to complete the requirements for one or two standard level subjects (excluding languages *ab initio* and pilot subjects) at the end of their first year of the Diploma Programme. They must complete all remaining IB diploma requirements in the corresponding examination session in the following year.

IB regions

Schools that are authorized to offer the IB Diploma Programme are grouped by geographical region. The abbreviations used in the tables are the codes describing the following geographical regions:

IBAEM	IB Africa, Europe and the Middle East
IBAP	IB Asia-Pacific
IBA	IB Latin America, North America and the Caribbean

Other abbreviations

HL	Higher level
SL	Standard level
EE	Extended essay
TOK	Theory of knowledge
PS	Pilot subjects
SBS	School-based syllabuses

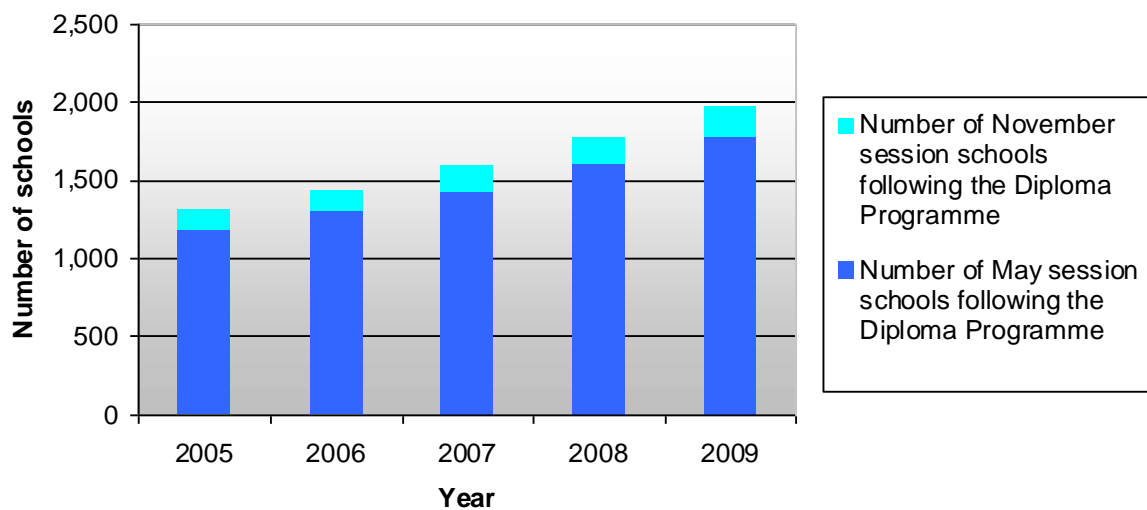
PART A: general school statistics

1 Number of schools following the Diploma Programme 2005–2009

Number of schools following the Diploma Programme*	2005	2006	2007	2008	2009
May session schools	1,179	1,298	1,428	1,601	1,776
November session schools	135	143	160	169	193
Total	1,314	1,441	1,588	1,770	1,969

*as of 31 May each year

Graph 1.1 Number of schools following the Diploma Programme 2005–2009

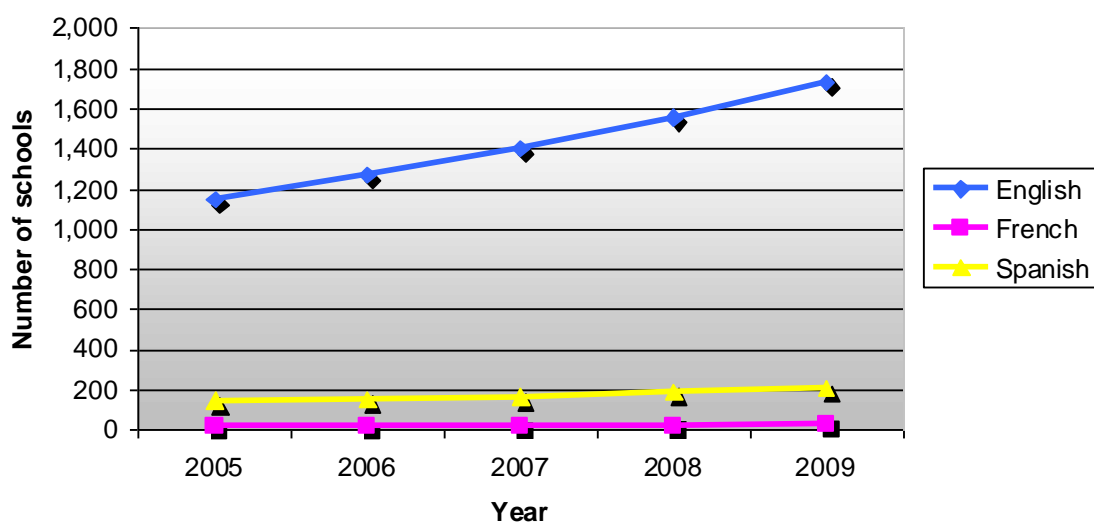


2 Number and percentage of schools following the Diploma Programme by working language 2005–2009

Number of schools following the Diploma Programme by working language*	2005	2006	2007	2008	2009
English	1,150	1,269	1,403	1,556	1,733
French	18	18	19	21	28
Spanish	146	154	166	193	208
Total	1,314	1,441	1,588	1,770	1969

*as of 31 May each year

Graph 2.1 Number of schools following the Diploma Programme by working language 2005–2009



Percentage of schools following the Diploma Programme by working language*	2005	2006	2007	2008	2009
English	87.52%	88.06%	88.35%	87.91%	88.01%
French	1.37%	1.25%	1.20%	1.19%	1.42%
Spanish	11.11%	10.69%	10.45%	10.90%	10.57%

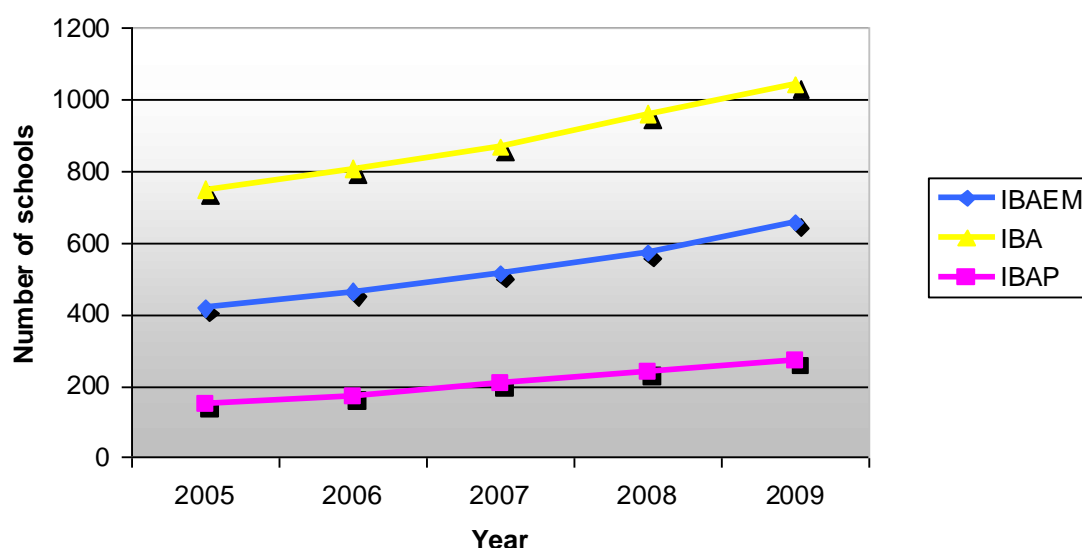
*as of 31 May each year

3 Number and percentage of schools following the Diploma Programme by IB region 2005–2009

Number of schools following the Diploma Programme by IB region*	2005	2006	2007	2008	2009
IBAEM	417	463	515	571	656
IBAP	148	172	206	240	270
IBA	749	806	867	959	1,043
Total	1,314	1,441	1,588	1,770	1,969

*as of 31 May each year

Graph 3.1 Number of schools following the Diploma Programme by IB region 2005–2009



Percentage of schools following the Diploma Programme by IB region*	2005	2006	2007	2008	2009
IBAEM	31.74%	32.13%	32.43%	32.26%	33.32%
IBAP	11.26%	11.94%	12.97%	13.56%	13.71%
IBA	57.01%	55.93%	54.59%	54.18%	52.97%

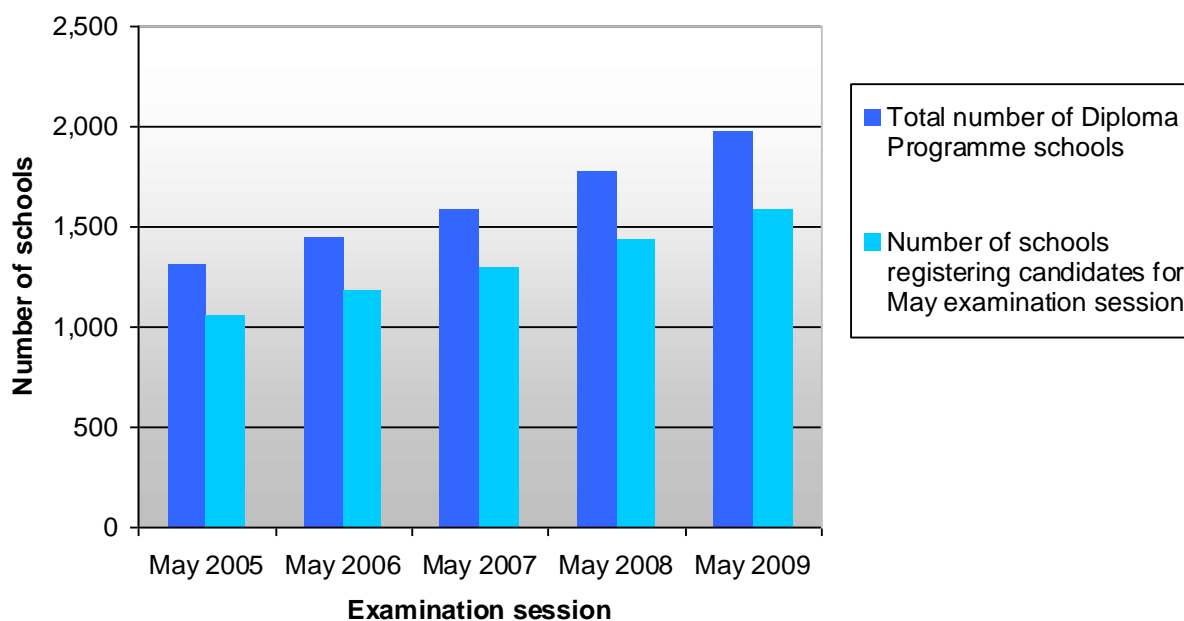
*as of 31 May each year

PART B: registration statistics

4 Number of schools registering candidates May 2005–May 2009

Number of schools registering candidates	May 2005	May 2006	May 2007	May 2008	May 2009
	1,059	1,178	1,289	1,432	1582
Percentage of total number of schools	80.59%	81.75%	81.17%	80.90%	80.35%

Graph 4.1 Number of schools registering candidates May 2005–May 2009



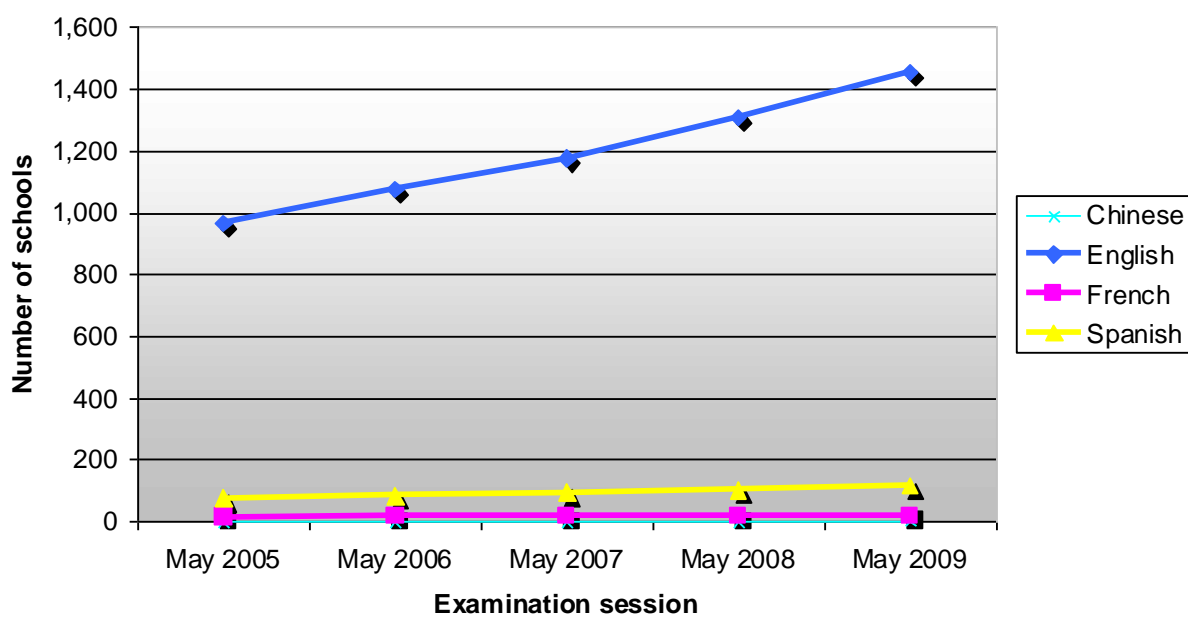
5 Number of May session schools registering candidates May 2005–May 2009

Number of May session schools registering candidates	May 2005	May 2006	May 2007	May 2008	May 2009
	1,010	1,123	1,239	1,373	1,519
Total number of May session schools	1,179	1,298	1,428	1,601	1,776
Percentage of all May session schools	85.67%	86.52%	86.76%	85.76%	85.53%

6 Number of schools registering candidates by working language May 2005–May 2009

Number of schools registering candidates by working language	May 2005	May 2006	May 2007	May 2008	May 2009
English	968	1,078	1,177	1,311	1448
French	15	17	18	18	19
Spanish	76	83	94	103	115
Total	1,059	1,178	1,289	1,432	1582

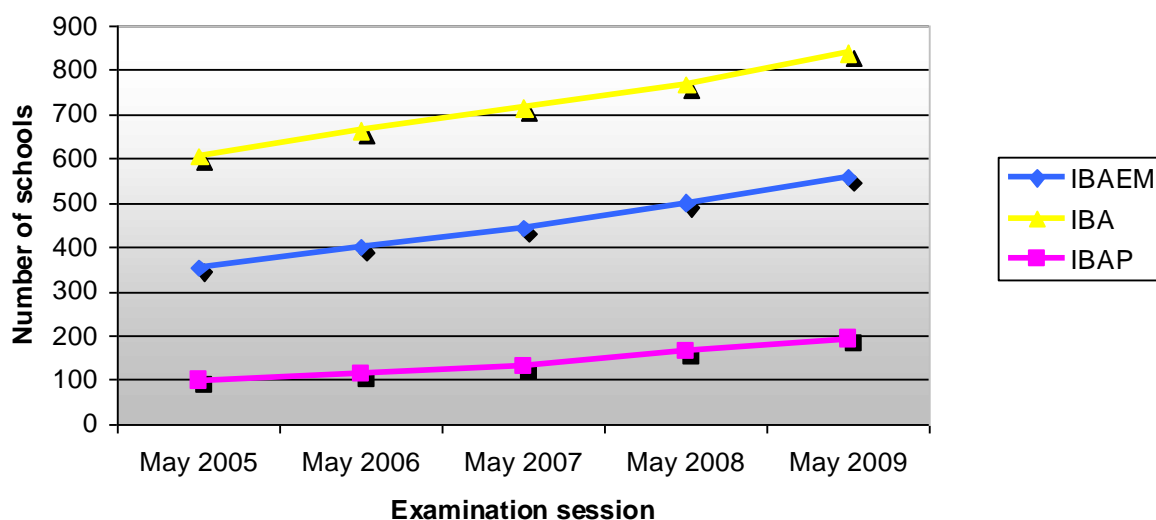
Graph 6.1 Number of schools registering candidates by working language May 2005–May 2009



7 Number and percentage of schools registering candidates by IB region May 2005–May 2009

Number of schools registering candidates by IB region	May 2005	May 2006	May 2007	May 2008	May 2009
IBAEM	355	401	443	500	558
IBAP	99	114	131	165	193
IBA	605	663	715	767	839
Total	1,059	1,178	1,289	1,432	1,590

Graph 7.1 Number of schools registering candidates by IB region May 2005–May 2009



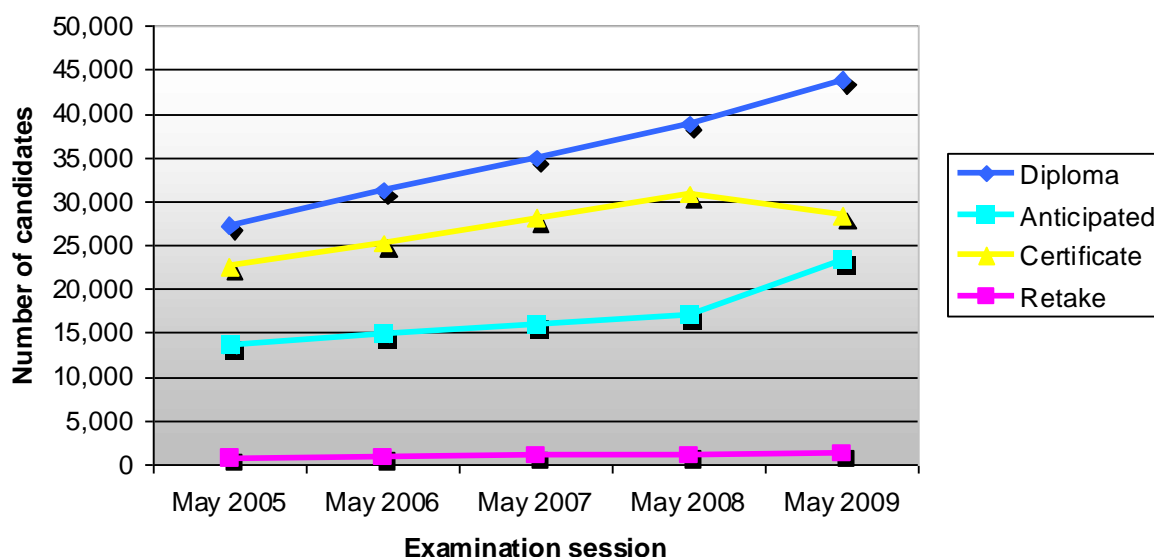
Percentage of schools registering candidates by IB region	May 2005	May 2006	May 2007	May 2008	May 2009
IBAEM	33.52%	34.04%	34.37%	34.92%	35.09%
IBAP	9.35%	9.68%	10.16%	11.52%	12.14%
IBA	57.13%	56.28%	55.47%	53.56%	52.77%

8 Number of candidates registered by category May 2005–May 2009

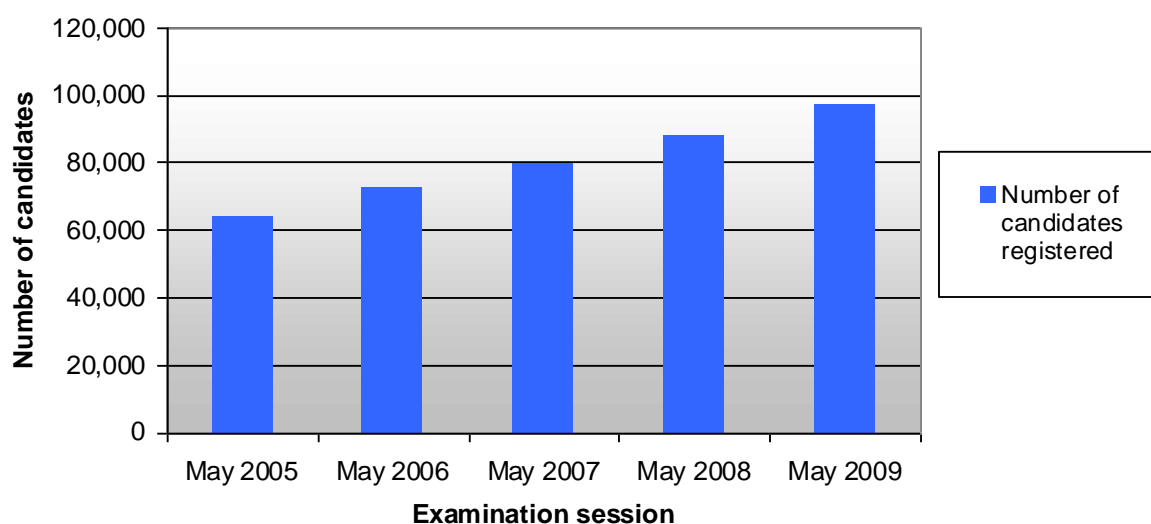
Number of candidates registered by category	May 2005	May 2006	May 2007	May 2008	May 2009
Diploma	27,249	31,249	34,912	38,842	43,881
Retake	722	877	991	1,072	1,249
Certificate	22,597	25,272	28,119	30,821	28,386*
Anticipated	13,513	14,772	15,912	17,039	23,260*
Total	64,081	72,170	79,934	87,777	96,776

* Please note: Anticipated candidates are allowed to change their category to certificate and this will affect these figures.

Graph 8.1 Number of candidates registered by category May 2005–May 2009



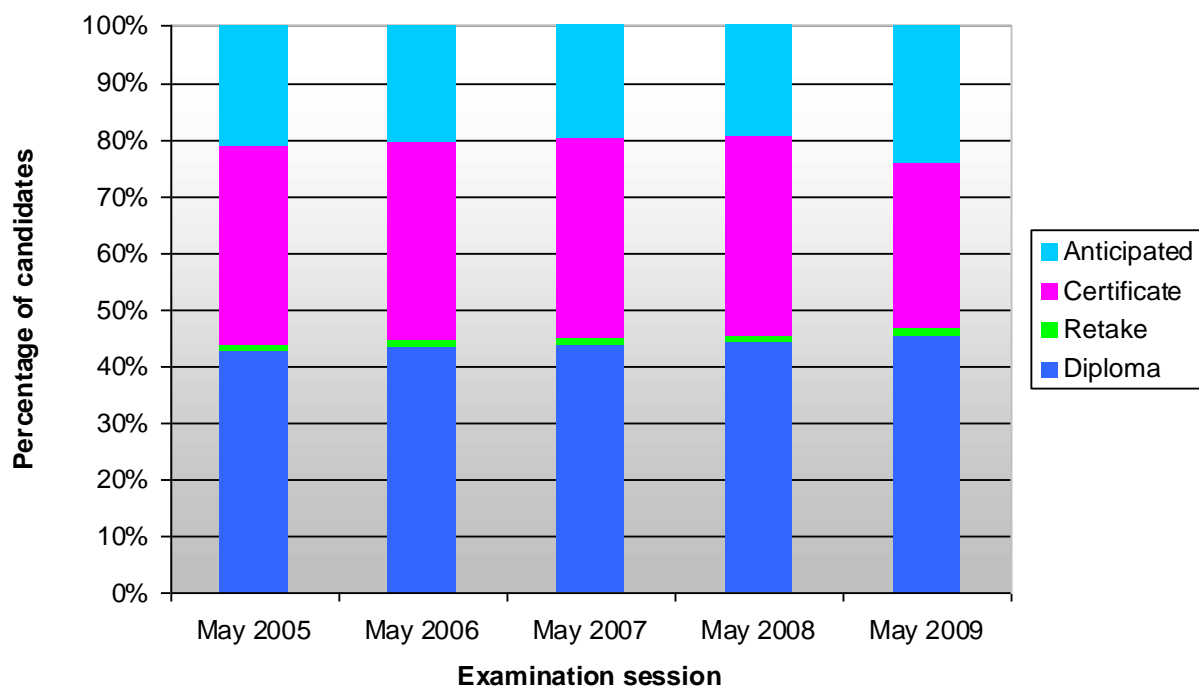
Graph 8.2 Number of candidates registered May 2005–May 2009



Percentage of candidates registered by category	May 2005	May 2006	May 2007	May 2008	May 2009
Diploma	42.52%	43.30%	43.68%	44.25%	45.34%
Retake	1.13%	1.22%	1.24%	1.22%	1.29%
Certificate	35.26%	35.02%	35.18%	35.11%	29.34%*
Anticipated	21.09%	20.47%	19.91%	19.42%	24.03%*

* Please note: Anticipated candidates are allowed to change their category to certificate and this will affect these figures.

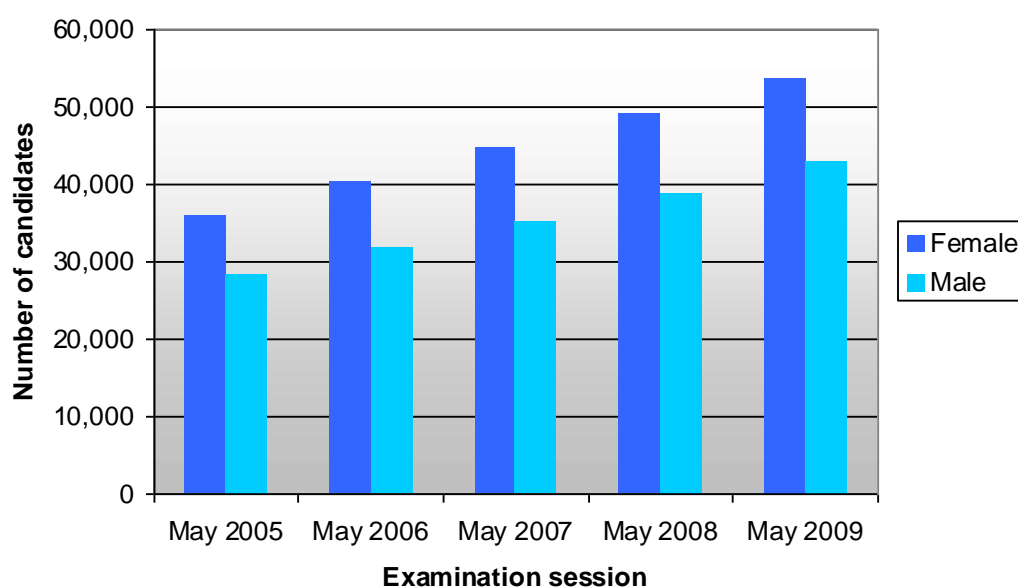
Graph 8.3 Percentages of candidates registered May 2005–May 2009



9 Number of candidates registered by gender May 2005–May 2009

Number of candidates registered by gender	May 2005	May 2006	May 2007	May 2008	May 2009
Female	35,824	40,285	44,833	49,002	53,706
Male	28,257	31,885	35,101	38,775	43,070
Total	64,081	72,170	79,934	87,777	96,776

Graph 9.1 Number of candidates registered by gender May 2005–May 2009

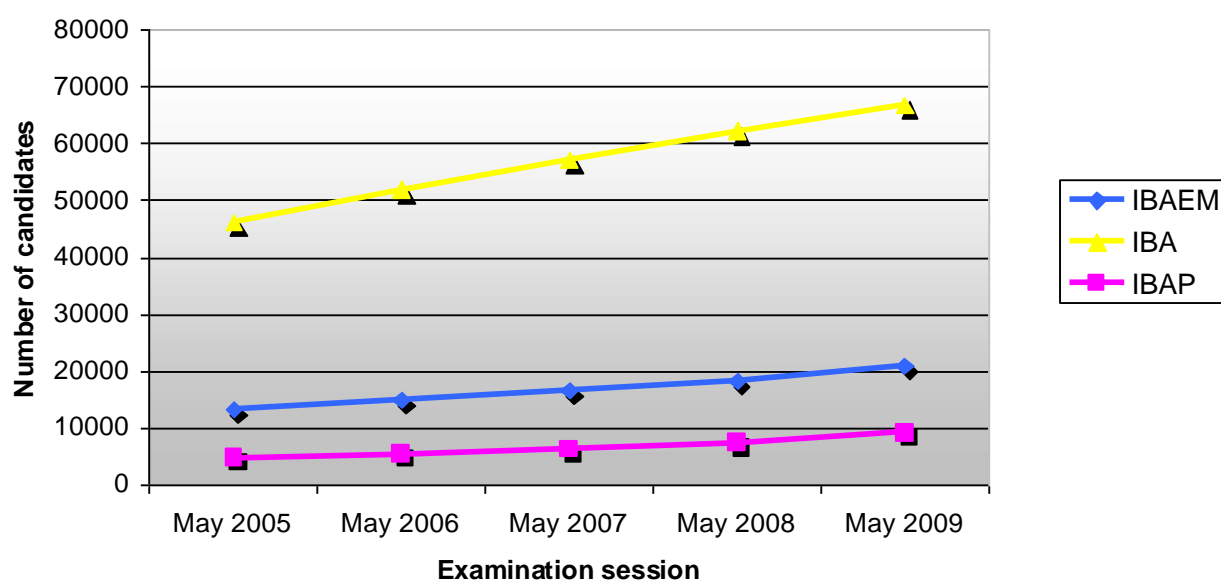


Percentage of candidates registered by gender	May 2005	May 2006	May 2007	May 2008	May 2009
Female	55.90%	55.82%	56.09%	55.83%	55.50%
Male	44.10%	44.18%	43.91%	44.17%	44.50%

10 Number of candidates registered by IB region May 2005–May 2009

Number of candidates registered by IB region	May 2005	May 2006	May 2007	May 2008	May 2009
IBAEM	13,221	14,884	16,533	18,214	20,852
IBAP	4,782	5,382	6,240	7,357	9,130
IBA	46,078	51,904	57,161	62,206	66,794
Total	64,081	72,170	79,934	87,777	96,776

Graph 10.1 Number of candidates registered by IB region May 2005–May 2009

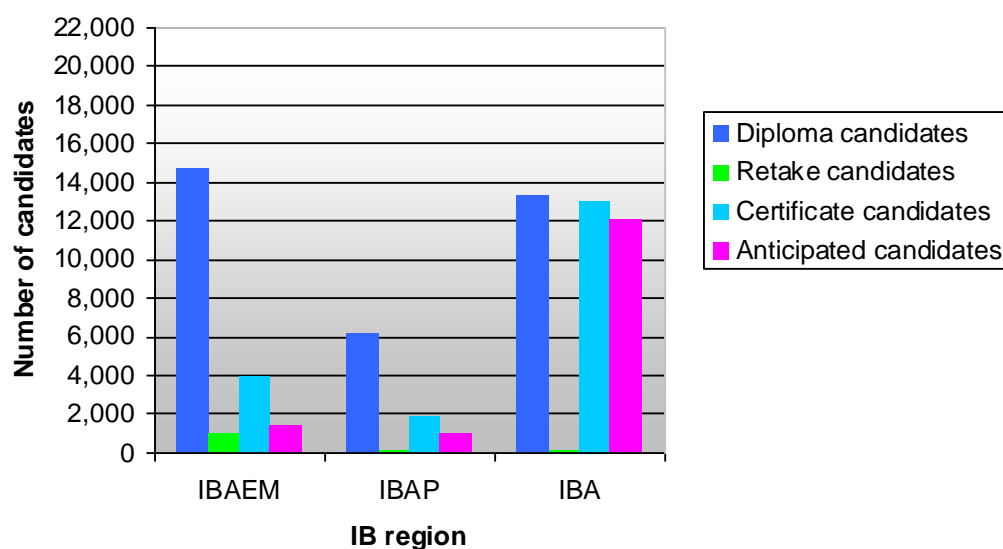


Percentage of candidates registered by IB region	May 2005	May 2006	May 2007	May 2008	May 2009
IBAEM	20.63%	20.62%	20.68%	20.75%	21.55%
IBAP	7.46%	7.46%	7.81%	8.38%	9.43%
IBA	71.91%	71.92%	71.51%	70.87%	69.02%

11 Number of candidates registered by category, gender and IB region May 2009

IB region	Category	Number of candidates registered		Total number of candidates registered	Regional Category Percentage
		Number of female candidates	Number of male candidates		
IBAEM	Diploma	7,903	6,788	14,691	70.45%
	Retake	463	497	960	4.60%
	Certificate	1833	2030	3863	18.53%
	Anticipated	703	635	1338	6.42%
		52.28%	47.72%	20,852	
IBAP	Diploma	3,015	3,174	6,189	67.79%
	Retake	49	84	133	1.46%
	Certificate	866	959	1,825	19.99%
	Anticipated	475	508	983	10.77%
		48.25%	51.75%	9,130	
IBA	Diploma	13,268	9,733	23,001	34.44%
	Retake	86	70	156	0.23%
	Certificate	13,013	9685	22,698	33.98%
	Anticipated	12,033	8906	20,939	31.35%
		57.49%	42.51%	66,794	
Total		53,707	43,069	96,776	

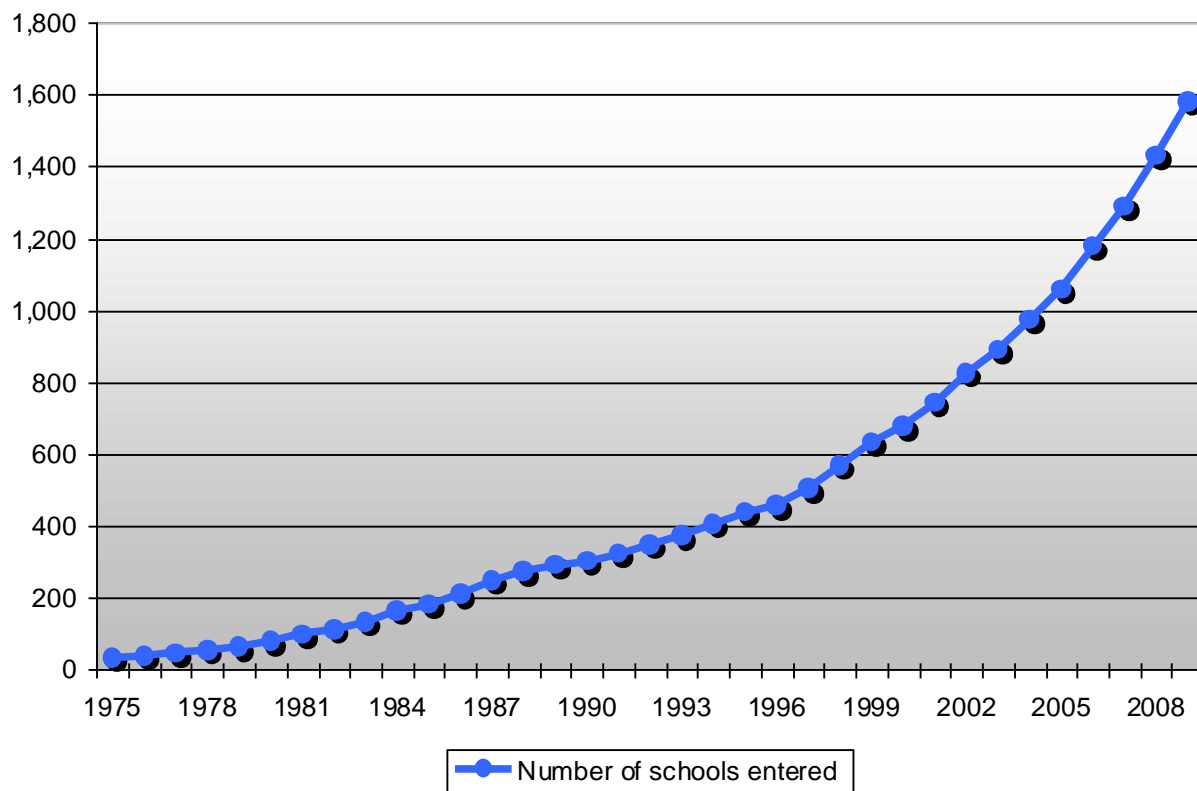
Graph 11.1 Number of candidates registered by category and IB region May 2009



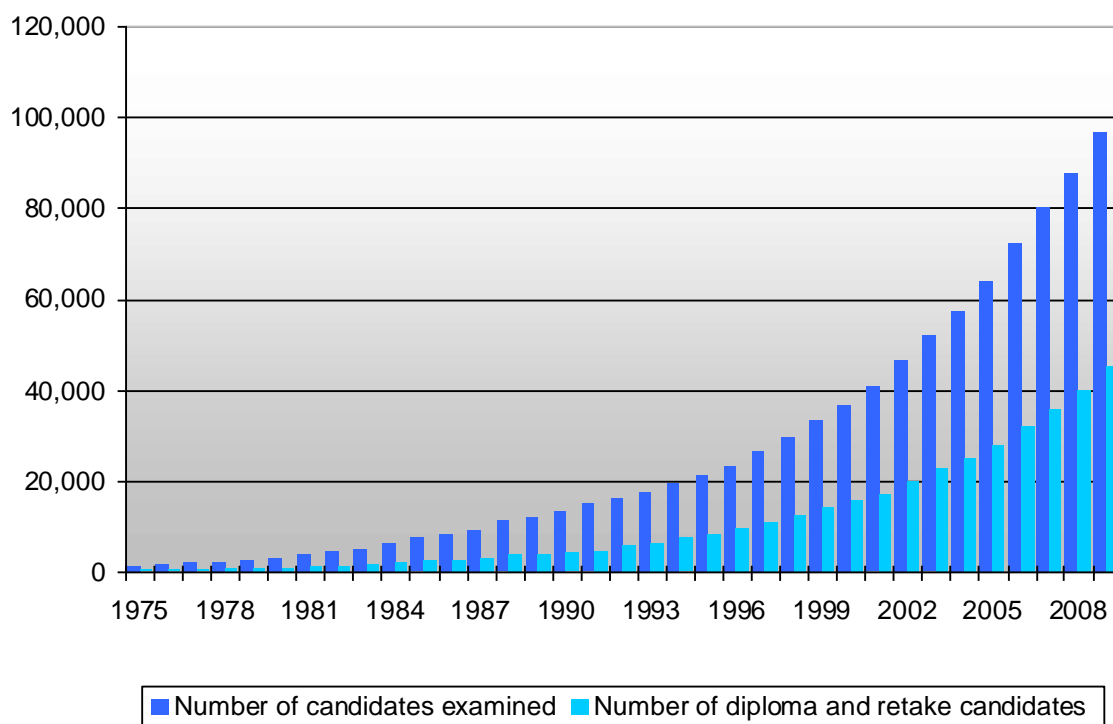
12 Summary of Diploma Programme examination entries: schools with registered candidates May 1975–May 2009

Year	Number of schools entered	Percentage of increase	Number of candidates examined	Percentage of increase	Average number of candidates per school	Number of diploma and retake candidates	Average number of diploma and retake candidates per school
1975	30	30%	1,217	19%	40.6	377	12.6
1976	37	23%	1,600	31%	43.2	567	15.3
1977	44	19%	1,966	23%	44.7	644	14.6
1978	52	18%	2,222	13%	42.7	680	13.1
1979	61	17%	2,479	12%	40.6	835	13.7
1980	76	25%	2,845	15%	37.4	1,005	13.2
1981	96	26%	3,719	31%	38.7	1,244	13.0
1982	111	16%	4,644	25%	41.8	1,505	13.6
1983	131	18%	5,021	8%	38.3	1,603	12.2
1984	163	24%	6,385	27%	39.2	2,183	13.4
1985	180	10%	7,606	19%	42.3	2,440	13.6
1986	209	16%	8,389	10%	40.1	2,679	12.8
1987	246	18%	9,387	12%	38.2	2,942	12.0
1988	270	10%	11,233	20%	41.6	3,564	13.2
1989	291	8%	11,946	6%	41.1	3,904	13.4
1990	301	3%	13,321	12%	44.3	4,287	14.2
1991	322	7%	14,749	11%	45.8	4,811	14.9
1992	346	7%	16,078	9%	46.5	5,693	16.5
1993	370	7%	17,552	9%	47.4	6,432	17.4
1994	405	9%	19,509	11%	48.2	7,331	18.1
1995	437	8%	21,361	9%	48.9	8,403	19.2
1996	455	4%	23,448	10%	51.5	9,396	20.7
1997	502	10%	26,570	13%	52.9	10,868	21.6
1998	568	13%	29,505	11%	51.9	12,476	22.0
1999	631	11%	33,143	12%	52.5	14,001	22.2
2000	678	7%	36,758	11%	54.2	15,592	23.0
2001	743	10%	40,579	10%	54.6	16,880	22.7
2002	825	11%	46,659	15%	56.6	19,796	24.0
2003	890	8%	52,110	12%	58.6	22,662	25.5
2004	974	9%	57,230	10%	58.8	25,111	25.8
2005	1,059	9%	64,081	12%	60.5	27,971	26.4
2006	1,178	11%	72,170	13%	61.3	32,126	27.3
2007	1,289	9%	79,934	11%	62.0	35,903	30.2
2008	1,432	11%	87,777	10%	61.3	39,914	30.4
2009	1,582	10%	96,776	10%	61.2	45,130	31.3

Graph 12.1 Summary of Diploma Programme examination entries: schools with candidates registered May 1975–May 2009



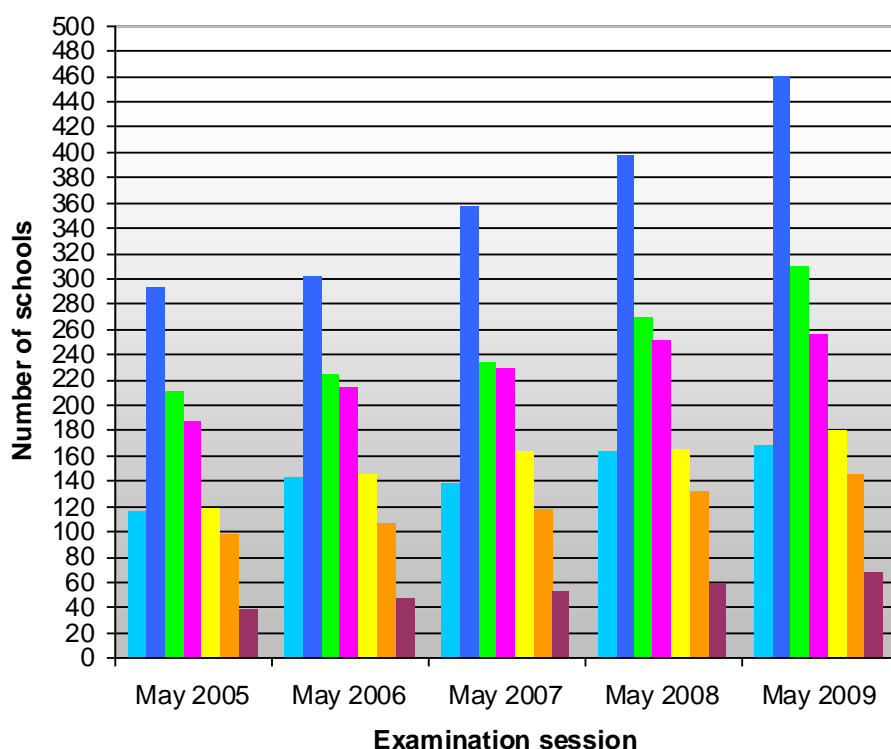
Graph 12.2 Summary of Diploma Programme examination entries: total number of candidates registered; number of diploma and retake candidates registered May 1975–May 2009



13 Number of schools that registered a particular number of candidates May 2005–May 2009

Number of schools that registered a particular number of candidates	May 2005	May 2006	May 2007	May 2008	May 2009
1–10 candidates	115	142	138	162	167
11–30 candidates	292	302	357	397	459
31–50 candidates	211	224	233	268	309
51–80 candidates	187	213	229	251	256
81–120 candidates	118	145	162	164	179
121–200 candidates	98	106	117	131	145
Over 200 candidates	38	46	53	59	67
Total	1,059	1,178	1,289	1,432	1582

Graph 13.1 Number of schools that registered a particular number of candidates May 2005–May 2009



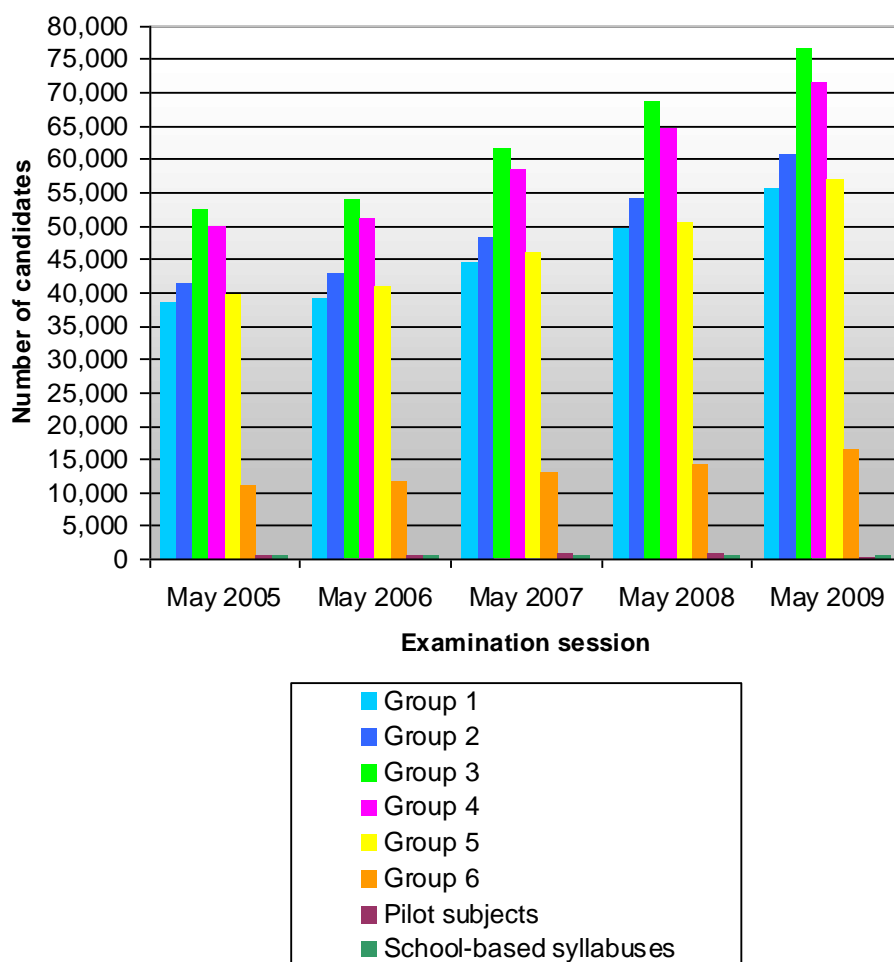
14 Subject registration summary May 2009

Subject group	Subject registrations						Number of subjects		
	English	French	Spanish	German*	Portuguese*	Total	Higher level	Standard level	Total
Group 1	–	–	–	–	–	55,416	45	72	117
Group 2	–	–	–	–	–	60,692	35	47	82
Group 3	72,582	665	3,213	119	0	76,579	9	11	20
Group 4	67,901	698	2,866	119	0	71,584	4	5	9
Group 5	53,952	529	2,592	0	0	57,073	2	4	6
Group 6	15,648	32	883	0	0	16,563	4	4	8
PS	346	0	0	0	0	346	1	3	4
SBS	677	0	0	0	41	718	0	14	14
Totals	211,106	1,924	9,554	238	41	338,971	100	160	260

*Subject registration in German is only allowed for History and Biology, and in Portuguese for SBS.

15 Subject group registrations May 2005–May 2009

Graph 15.1 Number of candidates registered for subject groups May 2004–May 2008



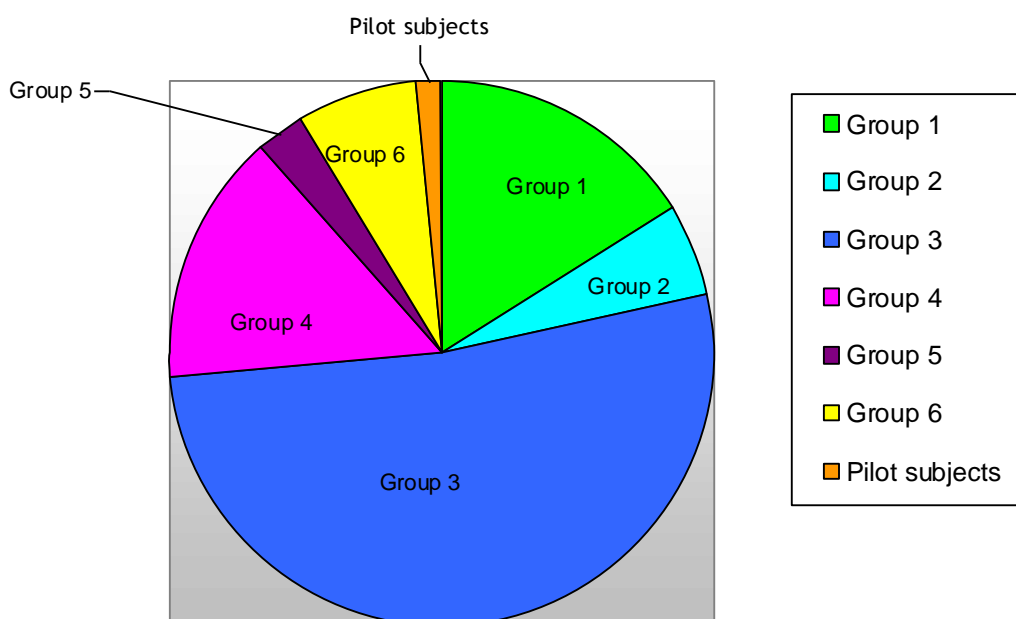
16 Additional Diploma Programme requirements: extended essay and theory of knowledge May 2005–2009

Number of candidates registered for extended essay and theory of knowledge	May 2005	May 2006	May 2007	May 2008	May 2009
Extended essay	28,069	32,068	35,828	39,827	45,403
Theory of knowledge	27,487	31,576	35,227	39,240	44,204

17 Subject registration summary: extended essay by subject group May 2009

Number of EE candidates registered for a particular subject group	Group 1	Group 2	Group 3	Group 4	Group 5	Group 6	Pilot subjects	Total
	7,317	2,580	23,481	6,912	1,168	3,371	574	45,403
Percentage of EE candidates registered for a particular subject group	16.12%	5.68%	51.72%	15.22%	2.57%	7.42%	1.26%	100.00%

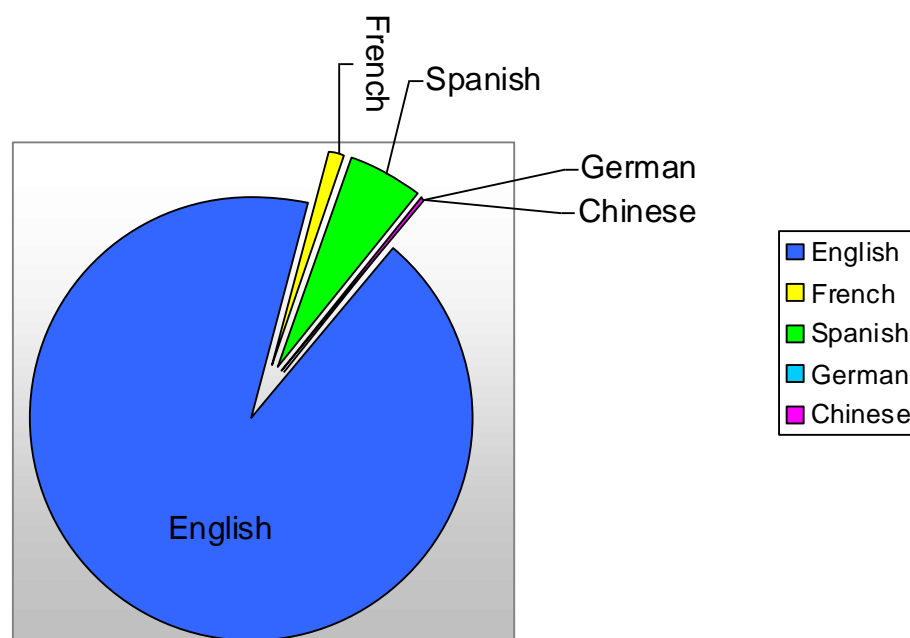
Graph 17.1 Subject registration summary: extended essay by subject group May 2009



18 Subject registration summary: theory of knowledge by language May 2009

Theory of knowledge registration by language	English	French	Spanish	German	Chinese	Total
Number of candidates registered	41,149	475	2,464	13	103	44,204
Percentage of candidates registered	93.09%	1.07%	5.57%	0.03%	0.23%	100.00%

Graph 18.1 Subject registration summary: theory of knowledge by language May 2009



19 Nationalities of candidates registered May 2009

Country name	Number of candidates	Country name	Number of candidates
AFGANISTAN	178	CZECH REPUBLIC	104
ALBANIA	77	DENMARK	318
ALGERIA	18	DJIBOUTI	3
ANGOLA	13	DOMINICA	1
ANTIGUA AND BARBUDA	1	DOMINICAN REPUBLIC	34
ARGENTINA	195	ECUADOR	445
ARMENIA	20	EGYPT	268
AUSTRALIA	525	EL SALVADOR	120
AUSTRIA	229	EQUATORIAL GUINEA	2
AZERBAIJAN	16	ERITREA	13
BAHAMAS	28	ESTONIA	35
BAHRAIN	142	ETHIOPIA	119
BANGLADESH	101	FALKLAND ISLANDS	1
BARBADOS	4	FAROE ISLANDS	1
BELARUS	26	FIJI	10
BELGIUM	237	FINLAND	487
BELIZE	1	FRANCE	517
BENIN	1	GABON	1
BERMUDA	71	GAMBIA	16
BHUTAN	11	GEORGIA	10
BOLIVIA	62	GERMANY	1,646
BOSNIA AND HERZEGOVINA	138	GHANA	118
BOTSWANA	12	GREECE	496
BRAZIL	420	GREENLAND	5
BRITISH INDIAN OCEAN TERRITORY	5	GUAM	1
BRUNEI DARUSSALAM	20	GUATEMALA	34
BULGARIA	101	GUINEA	3
BURKINA FASO	6	GUYANA	10
BURUNDI	7	HAITI	37
CAMBODIA	24	HONDURAS	111
CAMEROON	17	HONG KONG	328
CANADA	8,886	HUNGARY	97
CAPE VERDE	1	ICELAND	36
CAYMAN ISLANDS	1	INDIA	2,054
CHILE	220	INDONESIA	490
CHINA	1,321	IRAN, ISLAMIC REPUBLIC OF	88
COLOMBIA	769	IRAQ	43
CONGO	8	IRELAND	86
CONGO, THE DEMOCRATIC REPUBLIC OF THE	7	ISRAEL	121
COSTA RICA	114	ITALY	525
COTE D'IVOIRE	10	JAMAICA	55
CROATIA	87	JAPAN	563
CUBA	40	JORDAN	345
CYPRUS	37	KAZAKHSTAN	29
KENYA	166	PAPUA NEW GUINEA	2

Country name	Number of candidates	Country name	Number of candidates
KOREA, DEMOCRATIC PEOPLE'S REPUBLIC OF	148	PARAGUAY	8
KOREA, REPUBLIC OF	1,321	PERU	102
KUWAIT	32	PHILIPPINES	345
KYRGYZSTAN	5	POLAND	767
LAOS	12	PORTUGAL	185
LATVIA	82	PUERTO RICO	23
LEBANON	125	QATAR	48
LESOTHO	81	ROMANIA	109
LIBERIA	8	RUSSIAN FEDERATION	357
LIBYAN ARAB JAMAHIRIYA	13	RWANDA	16
LIECHTENSTEIN	1	SAINT LUCIA	2
LITHUANIA	105	SAMOA	1
LUXEMBOURG	27	SAUDI ARABIA	60
MACAO	3	SENEGAL	35
MACEDONIA, THE FORMER YUGOSLAV REPUBLIC OF	49	SERBIA	92
MADAGASCAR	5	SIERRA LEONE	11
MALAWI	15	SINGAPORE	244
MALAYSIA	681	SLOVAK REPUBLIC	102
MALDIVES	12	SLOVENIA	58
MALI	4	SOLOMON ISLANDS	1
MALTA	5	SOMALIA	15
MAURITANIA	4	SOUTH AFRICA	175
MAURITIUS	38	SPAIN	1,400
MEXICO	2,586	SRI LANKA	66
MOLDOVA, REPUBLIC OF	13	SUDAN	47
MONACO	2	SURINAME	1
MONGOLIA	33	SWAZILAND	4
MONTENEGRO	6	SWEDEN	1,129
MOROCCO	56	SWITZERLAND	376
MOZAMBIQUE	11	SYRIAN ARAB REPUBLIC	23
MYANMAR	11	TAIWAN	262
NAMIBIA	18	TIJKISTAN	6
NEPAL	61	TANZANIA, UNITED REPUBLIC OF	115
NETHERLANDS	2,503	THAILAND	384
NETHERLANDS ANTILLES	2	TIMOR-LESTE	7
NEW ZEALAND	127	TOGO	21
NICARAGUA	17	TONGA	1
NIGER	3	TRINIDAD AND TOBAGO	18
NIGERIA	133	TUNISIA	7
NORWAY	576	TURKEY	480
OMAN	76	TURKMENISTAN	2
PAKISTAN	225	UGANDA	42
PALAU	4	UKRAINE	84
PALESTINIAN TERRITORY, OCCUPIED	89	UNITED ARAB EMIRATES	34
PANAMA	38	UNITED KINGDOM	4,213
UNITED STATES	50,775	WESTERN SAHARA	1
URUGUAY	220	YEMEN	14

Country name	Number of candidates	Country name	Number of candidates
US MINOR OUTLINING ISLANDS	5	YUGOSLAVIA	3
UZBEKISTAN	22	ZAMBIA	29
VENEZUELA	283	ZIMBABWE	50
VIETNAM	291	OTHER	178
VIRGIN ISLANDS, U.S.	1		

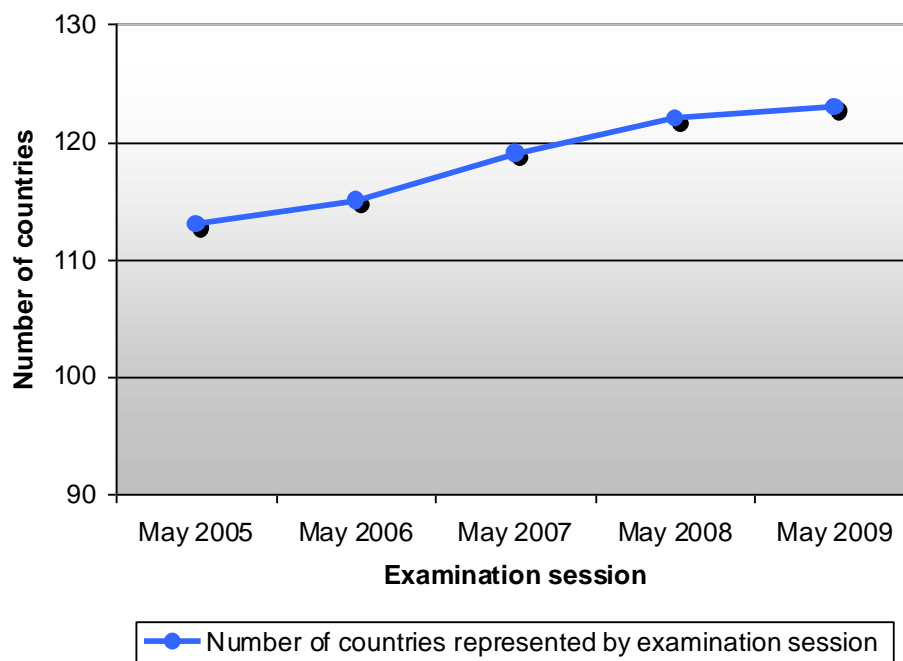
Total number of nationalities: 202 (192 are above, and 10 other nationalities are from dual nationality candidates whose second nationality is not in the above)

Candidates with dual nationality (Second nationality is not included in the above): 9,646

20 Number of countries represented by examination session May 2005–May 2009

Number of countries represented by examination session	May 2005	May 2006	May 2007	May 2008	May 2009
	113	115	119	122	123

Graph 20.1 Number of countries represented by examination session May 2005–May 2009



21 Number of candidates registered by country of school May 2009

Country name	Number of candidates registered	Country name	Number of candidates registered
ANGOLA	12	ICELAND	35
ARGENTINA	154	INDIA	1,618
AUSTRALIA	196	INDONESIA	782
AUSTRIA	331	IRAN, ISLAMIC REPUBLIC OF	21
AZERBAIJAN	15	IRELAND	41
BAHAMAS	36	ISLE OF MAN	63
BAHRAIN	222	ISRAEL	16
BANGLADESH	87	ITALY	562
BELGIUM	292	JAPAN	397
BERMUDA	90	JORDAN	333
BOLIVIA	17	KAZAKHSTAN	9
BOSNIA AND HERZEGOVINA	139	KENYA	199
BOTSWANA	4	KOREA, REPUBLIC OF	261
BRAZIL	348	KUWAIT	59
BRUNEI DARUSSALAM	40	LATVIA	61
BULGARIA	47	LEBANON	125
CAMBODIA	20	LESOTHO	89
CANADA	9,086	LITHUANIA	69
CHILE	231	LUXEMBOURG	69
CHINA	1,360	MACEDONIA, THE FORMER YUGOSLAV REPUBLIC OF	33
COLOMBIA	614	MALAWI	33
COSTA RICA	192	MALAYSIA	719
CROATIA	64	MALTA	28
CUBA	7	MAURITIUS	18
CYPRUS	48	MEXICO	2,295
CZECH REPUBLIC	149	MONACO	21
DENMARK	315	MONGOLIA	19
DOMINICAN REPUBLIC	26	MOROCCO	71
ECUADOR	420	MOZAMBIQUE	19
EGYPT	272	NAMIBIA	15
EL SALVADOR	87	NETHERLANDS	2,413
ESTONIA	4	NETHERLANDS ANTILLES	45
ETHIOPIA	85	NEW ZEALAND	113
FIJI	2	NICARAGUA	3
FINLAND	452	NIGERIA	7
FRANCE	494	NORWAY	742
GERMANY	1,030	OMAN	135
GHANA	154	PAKISTAN	17
GREECE	559	PALESTINIAN TERRITORY, OCCUPIED	80
GUAM	50	PANAMA	47
GUATEMALA	2	PERU	76
HONDURAS	100	PHILIPPINES	357
HONG KONG	1,288	POLAND	697
HUNGARY	80	PORTUGAL	182
QATAR	108	TAIWAN	340
ROMANIA	47	TANZANIA, UNITED REPUBLIC OF	140

Country name	Number of candidates registered	Country name	Number of candidates registered
RUSSIAN FEDERATION	122	THAILAND	627
RWANDA	5	TOGO	43
SAUDI ARABIA	161	TUNISIA	26
SENEGAL	22	TURKEY	450
SERBIA	49	UGANDA	82
SINGAPORE	642	UKRAINE	35
SLOVAKIA	90	UNITED ARAB EMIRATES	475
SLOVENIA	67	UNITED KINGDOM	3,976
SOUTH AFRICA	40	UNITED STATES	52,465
SPAIN	1,429	URUGUAY	206
SRI LANKA	54	UZBEKISTAN	10
SUDAN	13	VENEZUELA	254
SWAZILAND	22	VIETNAM	141
SWEDEN	1,130	ZAMBIA	51
SWITZERLAND	1,184	ZIMBABWE	42
SYRIAN ARAB REPUBLIC	13	Total number of candidates registered	96,776

PART C: results statistics

22 Analysis of examination results by subject and level May 2009

Subject	Level	Number of candidates	Percentage of candidates awarded grades							Mean grade
			1	2	3	4	5	6	7	
GROUP 1										
ALBANIAN A1	HL	1	0	0	0	0	0	0	100	7.00
ALBANIAN A1	SL	13	0	0	0	0	0	0	100	7.00
AMHARIC A1	HL	5	0	0	0	0	0	40	60	6.60
AMHARIC A1	SL	24	0	0	0	0	4	54	42	6.38
ARABIC A1	HL	175	0	0	1	14	65	20	1	5.06
ARABIC A1	SL	296	1	0	0	7	39	47	6	5.50
ARMENIAN A1	SL	1	0	0	0	0	0	100	0	6.00
BELARUSIAN A1	SL	4	0	0	0	0	0	50	50	6.50
BENGALI A1	SL	8	0	0	0	0	13	75	13	6.00
BOSNIAN A1	HL	45	0	0	0	16	56	24	4	5.18
BOSNIAN A1	SL	17	0	0	0	0	18	59	24	6.06
BULGARIAN A1	HL	23	0	0	0	0	22	43	35	6.13
BULGARIAN A1	SL	19	0	0	0	0	5	58	37	6.32
BURMESE A1	SL	2	0	0	0	0	100	0	0	5.00
CATALAN A1	HL	18	0	0	0	0	28	33	39	6.11
CATALAN A1	SL	32	0	0	0	0	9	38	53	6.44
CHICHEWA A1	SL	1	0	0	0	0	100	0	0	5.00
CHINESE A1	HL	376	0	1	3	19	39	32	5	5.15
CHINESE A1	SL	366	0	0	2	14	30	42	13	5.48
CROATIAN A1	HL	35	0	0	0	9	26	46	20	5.77
CROATIAN A1	SL	25	0	0	0	4	48	40	8	5.52
CZECH A1	HL	58	0	0	0	17	43	33	7	5.29
CZECH A1	SL	10	0	0	10	20	30	10	30	5.30
DANISH A1	HL	109	0	0	0	3	28	47	23	5.90
DANISH A1	SL	54	0	0	0	2	19	52	28	6.06
DHIVEHI A1	SL	3	0	0	0	33	33	0	33	5.33
DUTCH A1	HL	62	0	0	3	24	58	13	2	4.85
DUTCH A1	SL	127	0	0	5	15	28	38	14	5.42
DZONGKHA A1	SL	4	0	0	0	0	50	50	0	5.50
ENGLISH A1	HL	32,778	0	0	5	35	43	14	2	4.70
ENGLISH A1	SL	8,376	0	0	4	27	43	22	4	4.94
ESTONIAN A1	SL	6	0	0	0	0	0	0	100	7.00
FINNISH A1	HL	134	0	0	0	10	46	35	8	5.41
FINNISH A1	SL	123	0	0	0	8	38	47	7	5.52
FRENCH A1	HL	461	0	0	1	20	41	31	6	5.19
FRENCH A1	SL	210	0	1	4	27	28	28	11	5.10
GEORGIAN A1	SL	1	0	0	0	0	100	0	0	5.00
GERMAN A1	HL	762	0	0	1	14	42	32	11	5.37
GERMAN A1	SL	347	0	0	1	13	33	35	18	5.58
GREENLAND A1	SL	4	0	0	0	0	0	100	0	6.00
HEBREW A1	HL	7	0	0	0	0	0	43	57	6.57
HEBREW A1	SL	27	0	0	0	0	4	44	52	6.48

Subject	Level	Number of candidates	Percentage of candidates awarded grades							Mean grade
			1	2	3	4	5	6	7	
GROUP 1										
HINDI A1	SL	47	0	0	2	2	21	49	26	5.94
HUNGARIAN A1	HL	13	0	0	0	0	15	23	62	6.46
HUNGARIAN A1	SL	24	0	0	0	8	33	25	33	5.83
ICELANDIC A1	HL	2	0	0	0	0	50	0	50	6.00
ICELANDIC A1	SL	7	0	0	0	14	14	57	14	5.71
INDONESIAN A1	HL	136	0	0	0	2	34	43	21	5.82
INDONESIAN A1	SL	194	0	0	0	6	19	52	24	5.93
ITALIAN A1	HL	172	0	0	2	41	38	13	6	4.81
ITALIAN A1	SL	75	0	1	7	27	28	27	11	5.04
JAPANESE A1	HL	102	0	0	0	2	12	44	42	6.26
JAPANESE A1	SL	84	0	0	0	1	11	62	26	6.13
KAZAKH A1	SL	2	0	50	0	50	0	0	0	3.00
KHMER A1	SL	9	0	0	0	0	0	44	56	6.56
KINYARWAND A1	SL	2	0	0	0	0	0	50	50	6.50
KOREAN A1	HL	232	0	0	0	0	9	46	45	6.36
KOREAN A1	SL	220	0	0	0	0	7	54	39	6.30
KURDISH A1	SL	1	0	0	0	0	0	100	0	6.00
LATVIAN A1	HL	32	0	0	0	6	13	50	31	6.06
LATVIAN A1	SL	13	0	0	15	8	15	38	23	5.46
LITHUANIAN A1	HL	24	0	0	0	0	8	42	50	6.42
LITHUANIAN A1	SL	55	0	0	5	4	15	40	36	5.98
MACEDONIAN A1	HL	30	0	0	0	0	0	23	77	6.77
MACEDONIAN A1	SL	8	0	0	0	0	0	0	100	7.00
MALAY A1	HL	10	0	0	0	0	10	70	20	6.10
MALAY A1	SL	441	0	0	0	0	1	35	64	6.63
MODERN GREEK A1	HL	228	0	0	0	12	45	27	15	5.44
MODERN GREEK A1	SL	178	0	0	1	8	37	42	12	5.58
MONGOLIAN A1	HL	4	0	0	0	0	25	25	50	6.25
MONGOLIAN A1	SL	7	0	0	0	0	29	29	43	6.14
NEPALI A1	SL	8	0	0	0	0	13	13	75	6.63
NORWEGIAN A1	HL	245	0	0	1	8	30	41	20	5.70
NORWEGIAN A1	SL	111	1	0	5	10	30	39	16	5.49
PERSIAN A1	HL	1	0	0	0	0	100	0	0	5.00
PERSIAN A1	SL	20	0	5	0	20	25	30	20	5.35
PILIPINO A1	HL	3	0	0	0	0	67	33	0	5.33
PILIPINO A1	SL	1	0	0	0	0	0	100	0	6.00
POLISH A1	HL	197	0	1	5	19	45	22	8	5.05
POLISH A1	SL	391	0	1	3	18	40	32	6	5.16
PORTUGUESE A1	HL	91	0	3	12	30	26	22	7	4.71
PORTUGUESE A1	SL	96	0	0	4	22	27	35	11	5.28
ROMANIAN A1	HL	7	0	0	0	0	14	71	14	6.00
ROMANIAN A1	SL	13	0	0	0	0	8	77	15	6.08
RUSSIAN A1	HL	77	0	1	4	19	32	34	9	5.21
RUSSIAN A1	SL	121	0	2	7	26	23	31	11	5.06
SERBIAN A1	HL	30	0	0	0	3	13	53	30	6.10
SERBIAN A1	SL	39	0	3	0	8	28	33	28	5.74
SESOTHO A1	HL	29	0	0	0	0	14	86	0	5.86
SESOTHO A1	SL	35	0	0	0	0	9	74	17	6.09

Subject	Level	Number of candidates	Percentage of candidates awarded grades							Mean grade
			1	2	3	4	5	6	7	
GROUP 1										
SHONA A1	SL	1	0	0	0	0	0	100	0	6.00
SINHALESE A1	SL	2	0	0	0	0	0	100	0	6.00
SLOVAK A1	HL	24	0	0	0	4	25	29	42	6.08
SLOVAK A1	SL	34	0	0	0	3	21	71	6	5.79
SLOVENE A1	HL	38	0	0	0	0	11	61	29	6.18
SLOVENE A1	SL	5	0	0	0	0	40	40	20	5.80
SOMALI A1	SL	1	0	0	0	0	0	100	0	6.00
SPANISH A1	HL	2,881	0	2	8	31	40	16	3	4.70
SPANISH A1	SL	532	0	0	11	27	34	21	5	4.81
SWAHILI A1	HL	7	0	0	0	0	0	71	29	6.29
SWAHILI A1	SL	18	0	0	0	0	17	50	33	6.17
SWEDISH A1	HL	407	0	0	1	11	34	40	14	5.56
SWEDISH A1	SL	359	0	0	1	9	37	44	9	5.51
TAMIL A1	SL	1	0	0	0	0	0	0	100	7.00
THAI A1	HL	13	0	0	0	31	54	8	8	4.92
THAI A1	SL	50	0	0	2	46	34	16	2	4.70
TIBETAN A1	SL	6	0	0	0	0	17	83	0	5.83
TURKISH A1	HL	227	0	0	1	5	28	48	17	5.74
TURKISH A1	SL	89	0	0	1	9	30	33	27	5.75
UKRAINIAN A1	SL	5	0	0	0	20	60	20	0	5.00
URDU A1	SL	12	0	0	0	0	8	25	67	6.58
UZBEK A1	SL	1	0	0	0	0	0	100	0	6.00
VIETNAMESE A1	HL	20	0	0	0	0	5	65	30	6.25
VIETNAMESE A1	SL	61	0	0	0	5	13	49	33	6.10
WELSH A1	SL	2	0	0	0	0	0	100	0	6.00
GROUP 1 TOTAL		53,812	0	1	4	30	41	19	5	4.89

Subject	Level	Number of candidates	Percentage of candidates awarded grades							Mean grade
			1	2	3	4	5	6	7	
GROUP 2										
ARABIC A2	HL	76	0	0	0	1	25	59	14	5.87
ARABIC A2	SL	42	0	0	0	0	17	67	17	6.00
ARABIC AB INITIO	SL	156	0	5	13	15	27	33	6	4.90
ARABIC B	HL	273	0	0	0	2	9	67	22	6.08
ARABIC B	SL	118	0	0	1	3	15	42	40	6.17
CANTONESE B	HL	12	0	0	0	0	0	58	42	6.42
CANTONESE B	SL	6	0	0	0	0	0	50	50	6.50
CHINESE A2	HL	84	0	0	0	0	14	60	26	6.12
CHINESE A2	SL	110	0	0	0	0	21	65	15	5.94
CLASSICAL GREEK	HL	18	0	0	0	0	6	6	89	6.83
CLASSICAL GREEK	SL	6	0	0	0	33	0	33	33	5.67
DANISH B	HL	54	0	0	0	13	31	31	24	5.67
DANISH B	SL	31	0	3	6	29	19	26	16	5.06
DUTCH A2	HL	48	0	0	0	27	35	27	10	5.21

Subject	Level	Number of candidates	Percentage of candidates awarded grades							Mean grade
			1	2	3	4	5	6	7	
GROUP 2										
DUTCH A2	SL	62	0	0	0	15	40	35	10	5.40
DUTCH B	HL	66	0	0	0	6	35	47	12	5.65
DUTCH B	SL	54	0	0	0	17	46	30	7	5.28
ENGLISH A2	HL	5,413	0	0	1	11	49	35	4	5.31
ENGLISH A2	SL	1,914	0	0	0	11	45	38	6	5.38
ENGLISH B	HL	5,661	0	0	1	9	30	50	10	5.57
ENGLISH B	SL	1,574	0	0	1	8	28	43	19	5.72
FINNISH B	HL	33	0	0	0	3	9	45	42	6.27
FINNISH B	SL	35	0	0	0	3	9	37	51	6.37
FRENCH A2	HL	284	0	0	0	9	32	49	9	5.57
FRENCH A2	SL	375	0	0	1	17	41	35	5	5.26
FRENCH AB INITIO	SL	1,386	0	5	13	18	25	26	12	4.92
FRENCH B	HL	2,602	0	1	9	17	28	28	16	5.23
FRENCH B	SL	9,191	0	4	13	26	27	22	8	4.72
GERMAN A2	HL	341	0	0	4	13	19	34	30	5.72
GERMAN A2	SL	146	0	0	0	0	18	49	34	6.16
GERMAN AB INITIO	SL	392	1	2	11	23	32	25	7	4.85
GERMAN B	HL	671	0	0	3	8	20	37	31	5.84
GERMAN B	SL	1,466	0	1	8	20	30	25	16	5.20
HEBREW B	SL	90	3	16	32	21	12	6	10	3.80
HINDI B	HL	167	0	0	0	4	23	68	6	5.76
HINDI B	SL	323	0	0	1	3	19	55	22	5.93
INDONESIAN AB INITIO	SL	18	0	0	6	11	22	56	6	5.44
INDONESIAN B	HL	54	0	0	0	6	26	41	28	5.91
INDONESIAN B	SL	24	0	0	4	8	25	42	21	5.67
ITALIAN AB INITIO	SL	528	1	10	17	23	24	15	11	4.48
ITALIAN B	HL	169	0	1	2	12	18	30	37	5.85
ITALIAN B	SL	301	1	11	27	24	19	11	7	4.13
JAPANESE A2	HL	79	0	0	0	1	29	39	30	5.99
JAPANESE A2	SL	28	0	0	0	0	7	57	36	6.29
JAPANESE AB INITIO	SL	383	1	5	11	22	22	24	16	4.95
JAPANESE B	HL	81	0	1	0	9	21	32	37	5.94
JAPANESE B	SL	320	0	2	13	19	22	26	18	5.12
KOREAN B	HL	47	0	0	0	0	2	26	72	6.70
KOREAN B	SL	78	0	4	0	6	24	42	23	5.71
LATIN	HL	165	0	9	20	18	18	15	20	4.70
LATIN	SL	671	4	13	21	24	14	14	10	4.13
MALAY AB INITIO	SL	43	0	0	0	14	37	26	23	5.58
MANDARIN AB INITIO	SL	345	0	4	8	11	23	31	23	5.39
MANDARIN B	HL	380	0	0	0	3	12	57	28	6.09
MANDARIN B	SL	896	0	0	2	8	20	39	32	5.91
MOD. GREEK A2	HL	29	0	0	0	0	55	38	7	5.52
MOD. GREEK A2	SL	36	0	0	0	19	31	33	17	5.47
NORWEGIAN B	HL	68	0	0	3	13	16	26	41	5.90
NORWEGIAN B	SL	26	0	0	8	15	23	23	31	5.54
PILIPINO A2	HL	18	0	0	0	0	22	56	22	6.00
PILIPINO A2	SL	7	0	0	0	0	57	0	43	5.86
PORTUGUESE A2	HL	93	0	0	0	6	42	48	3	5.48

PORTUGUESE A2	SL	36	0	0	0	0	44	50	6	5.61
PORTUGUESE B	HL	35	0	0	0	3	14	63	20	6.00
PORTUGUESE B	SL	31	0	0	0	3	35	35	26	5.84
RUSSIAN AB INITIO	SL	45	0	0	4	24	31	27	13	5.20
RUSSIAN B	HL	78	0	1	1	1	5	29	62	6.45
RUSSIAN B	SL	60	0	0	3	12	18	28	38	5.87
SPANISH A2	HL	437	0	0	11	15	29	38	8	5.17
SPANISH A2	SL	202	0	0	2	17	26	44	11	5.44
SPANISH AB INITIO	SL	2,716	0	2	11	24	32	22	10	4.89
SPANISH B	HL	3,763	0	1	5	15	23	37	19	5.46
SPANISH B	SL	12,550	0	4	15	26	27	21	7	4.69
SWAHILI AB INITIO	SL	25	0	4	0	8	36	52	0	5.32
SWEDISH A2	HL	32	0	0	0	16	25	44	16	5.59
SWEDISH A2	SL	47	0	0	0	4	23	51	21	5.89
SWEDISH B	HL	74	0	0	3	14	24	35	24	5.65
SWEDISH B	SL	95	2	4	1	13	37	37	6	5.14
THAI A2	HL	20	0	0	0	0	5	35	60	6.55
THAI A2	SL	33	0	0	0	0	12	45	42	6.30
URDU B	HL	6	0	0	0	0	17	67	17	6.00
URDU B	SL	4	0	0	0	0	25	75	0	5.75
GROUP 2 TOTAL		58,456	0	2	9	18	29	30	12	5.12

ITGS = INFORMATION TECHNOLOGY IN A GLOBAL SOCIETY

Subject	Level	Number of candidates	Percentage of candidates awarded grades							Mean grade
			1	2	3	4	5	6	7	
GROUP 3										
BUSINESS & MANAGEMENT	HL	3,752	1	5	15	26	31	18	5	4.53
BUSINESS & MANAGEMENT	SL	3,042	1	6	17	23	27	20	6	4.55
ECOSYSTEMS AND SOCIETY*	SL	230	1	3	24	23	27	15	7	4.47
ECONOMICS	HL	7,023	0	1	10	18	32	26	12	5.09
ECONOMICS	SL	5,173	0	2	9	16	30	28	15	5.18
GEOGRAPHY	HL	2,666	0	1	7	21	31	27	13	5.13
GEOGRAPHY	SL	2,143	0	10	16	25	26	17	6	4.40
HISTORY	HL	27,485	0	2	12	34	33	14	5	4.60
HISTORY	SL	4,765	0	2	9	29	40	16	4	4.68
ISLAMIC HISTORY	HL	51	0	0	4	20	41	33	2	5.10
ISLAMIC HISTORY	SL	97	0	2	13	28	33	20	4	4.67
ITGS	HL	1,185	1	6	25	35	24	8	1	4.02
ITGS	SL	1,896	1	4	24	36	23	12	2	4.18
PHILOSOPHY	HL	1,108	0	0	8	20	34	28	8	5.06
PHILOSOPHY	SL	1,421	0	2	14	25	29	23	7	4.77
PSYCHOLOGY	HL	3,703	0	3	12	27	35	19	4	4.66
PSYCHOLOGY	SL	6,529	1	7	17	30	24	15	5	4.35
SOCIAL AND CULTURAL ANTHROPOLOGY	HL	324	0	4	17	23	33	19	4	4.58
SOCIAL AND CULTURAL ANTHROPOLOGY	SL	971	0	2	10	33	40	14	1	4.59
WORLD CULTURES***	SL	93	0	0	2	5	16	48	28	5.95
GROUP 3 TOTAL		73,657	0	3	13	28	32	18	6	4.67

Subject	Level	Number of candidates	Percentage of candidates awarded grades							Mean grade
			1	2	3	4	5	6	7	
GROUP 4										
BIOLOGY	HL	17,900	0	10	23	26	23	15	4	4.18
BIOLOGY	SL	12,199	0	7	23	29	23	13	4	4.21
CHEMISTRY	HL	9,169	0	10	19	23	22	17	8	4.40
CHEMISTRY	SL	9,537	1	14	24	23	21	11	5	4.01
DESIGN TECHNOLOGY	HL	526	0	2	9	21	33	29	6	4.97
DESIGN TECHNOLOGY	SL	507	0	8	23	32	24	12	1	4.11
ENVIRONMENTAL SYSTEMS	SL	4,029	1	11	25	29	22	10	2	4.01
PHYSICS	HL	6,023	0	6	16	24	26	18	11	4.63
PHYSICS	SL	8,767	2	12	25	23	21	11	6	4.09
GROUP 4 TOTAL		68,657	1	10	22	25	23	14	5	4.21

Subject	Level	Number of candidates	Percentage of candidates awarded grades							Mean grade
			1	2	3	4	5	6	7	
GROUP 5										
COMPUTER SCIENCE	HL	429	1	5	12	21	21	23	17	4.92
COMPUTER SCIENCE	SL	654	1	11	16	19	22	22	9	4.51
FURTHER MATHEMATICS	SL	115	3	19	15	24	15	11	12	4.10
MATHEMATICAL STUDIES	SL	18,878	0	5	14	26	29	19	6	4.61
MATHEMATICS	HL	9,262	1	9	18	25	23	16	8	4.40
MATHEMATICS	SL	24,791	1	8	20	24	23	17	9	4.45
GROUP 5 TOTAL		54,129	1	7	17	25	25	17	8	4.50

Subject	Level	Number of candidates	Percentage of candidates awarded grades							Mean grade
			1	2	3	4	5	6	7	
GROUP 6										
FILM	HL	461	0	5	15	28	26	18	9	4.64
FILM	SL	131	0	4	10	27	36	18	6	4.72
MUSIC	HL	890	0	2	13	26	35	20	4	4.69
MUSIC	SL	1,690	1	2	10	26	43	16	2	4.65
TEXT & PERFORMANCE**	SL	56	0	0	2	16	30	43	9	5.41
THEATRE	HL	1,833	0	3	19	33	26	15	4	4.39
THEATRE	SL	842	0	2	15	32	32	14	5	4.53
VISUAL ARTS	HL	5,577	0	3	12	24	25	26	9	4.86
VISUAL ARTS	SL	3,763	1	7	17	28	23	19	6	4.43
GROUP 6 TOTAL		15,243	0	4	14	27	28	21	6	4.64

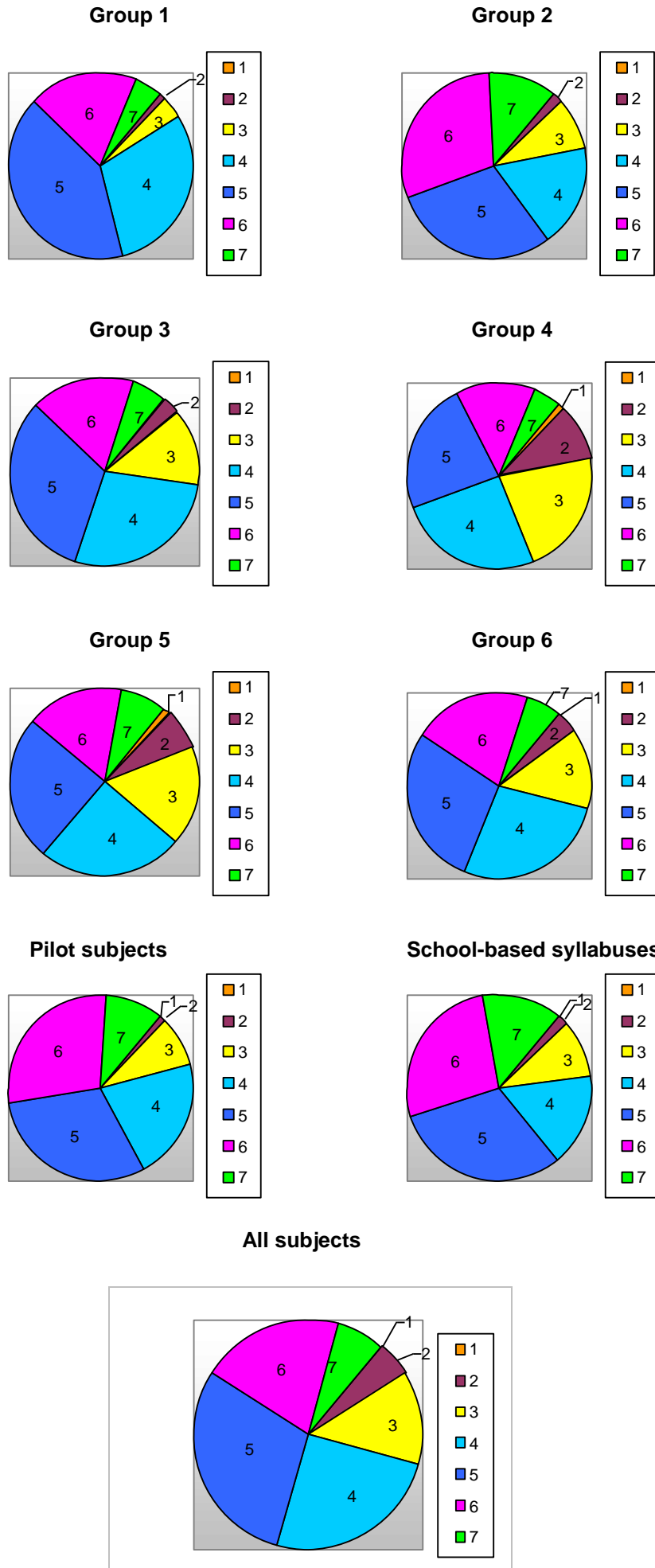
Subject	Level	Number of candidates	Percentage of candidates awarded grades							Mean grade
			1	2	3	4	5	6	7	
PILOT SUBJECTS										
DANCE	HL	118	0	0	3	10	25	45	17	5.62
DANCE	SL	44	0	0	11	16	23	34	16	5.27
SPORT & EXERCISE SCIENCE	SL	68	0	6	12	35	28	13	6	4.49
WORLD RELIGIONS	SL	93	0	0	13	28	40	17	2	4.68
PS TOTAL		323	0	1	9	21	30	29	10	5.06
SCHOOL-BASED SYLLABUSES										
Subject	Level	Number of candidates	Percentage of candidates awarded grades							Mean grade
			1	2	3	4	5	6	7	
ART HISTORY	SL	148	0	1	20	29	29	18	3	4.49
BEGINNERS' HINDI	SL	14	0	0	0	7	21	21	50	6.14
BEGINNERS' NYNORSK	SL	12	0	0	0	0	25	42	33	6.08
CHILE & PACIFIC BASIN	SL	16	0	0	0	0	75	19	6	5.31
CHINESE STUDIES	SL	21	0	0	0	0	29	52	19	5.90
CLASSICAL GREEK & ROMAN STUDIES	SL	25	0	0	0	0	12	48	40	6.28
HISTORICAL & CONTEMPORARY BRAZILIAN STUDIES	SL	74	0	3	8	31	31	22	5	4.77
HUMAN RIGHTS	SL	52	0	2	8	21	38	31	0	4.88
PEACE & CONFLICT STUDIES	SL	103	0	0	2	7	38	30	23	5.66
POLITICAL THOUGHT	SL	33	0	0	3	6	27	24	39	5.91
SCIENCE TECHNOLOGY & SOCIETY	SL	32	0	0	0	0	28	53	19	5.91
SOCIAL STUDIES	SL	9	0	11	11	22	22	22	11	4.67
TURKISH SOCIAL STUDIES	SL	119	1	8	17	15	30	20	9	4.64
WORLD POLITICS	SL	44	0	2	2	14	25	34	23	5.55
SBS TOTAL		702	0	2	10	16	31	27	14	5.13
ALL SUBJECTS TOTAL										
		324,979	0	5	13	25	30	20	7	4.66

* Trans-disciplinary subject groups 3 and 4

** Trans-disciplinary subject groups 1 and 6

*** Trans-disciplinary subject groups 3 and 6

Graph 22.1 Grade distribution by subject group May 2009



23 Diploma and retake candidates (D+R): distribution of points totals May 2009

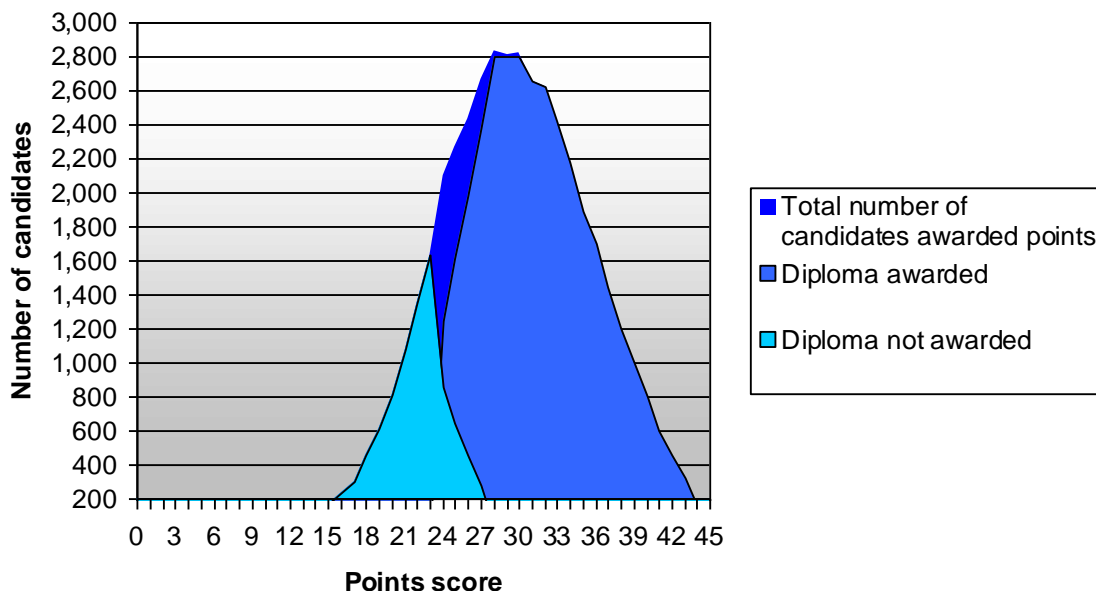
Total Points	Diploma awarded		Diploma not awarded		Total number of candidates awarded each points score	Cumulative
	Number of candidates	Percentage of candidates	Number of candidates	Percentage of candidates		
0						0.00%
1			1	0.00%	1	0.00%
2			5	0.01%	5	0.01%
3			13	0.03%	13	0.04%
4			21	0.05%	21	0.09%
5			26	0.06%	26	0.15%
6			23	0.05%	23	0.20%
7			16	0.04%	16	0.23%
8			28	0.06%	28	0.30%
9			31	0.07%	31	0.37%
10			36	0.08%	36	0.45%
11			53	0.12%	53	0.57%
12			63	0.14%	63	0.71%
13			80	0.18%	80	0.89%
14			106	0.24%	106	1.12%
15			171	0.38%	171	1.51%
16			240	0.54%	240	2.04%
17			304	0.68%	304	2.72%
18			462	1.03%	462	3.76%
19			618	1.38%	618	5.14%
20			819	1.83%	819	6.97%
21			1080	2.42%	1080	9.39%
22			1342	3.00%	1343	12.39%
23			1637	3.66%	1637	16.05%
24	1239	2.77%	861	1.93%	2102	20.76%
25	1616	3.62%	648	1.45%	2264	25.82%
26	1984	4.44%	453	1.01%	2435	31.27%
27	2383	5.33%	286	0.64%	2668	37.24%
28	2798	6.26%	35	0.08%	2834	43.58%
29	2801	6.27%	13	0.03%	2813	49.87%
30	2798	6.26%	20	0.04%	2818	56.18%
31	2650	5.93%	8	0.02%	2658	62.12%
32	2617	5.85%	7	0.02%	2624	67.99%
33	2419	5.41%	4	0.01%	2423	73.41%
34	2182	4.88%	2	0.00%	2184	78.30%
35	1886	4.22%	4	0.01%	1890	82.53%
36	1707	3.82%			1707	86.35%
37	1447	3.24%			1448	89.59%
38	1201	2.69%	1	0.00%	1201	92.27%
39	1001	2.24%			1002	94.51%
40	804	1.80%	1	0.00%	805	96.32%
41	600	1.34%			600	97.66%
42	463	1.04%			464	98.70%
43	330	0.74%			328	99.43%
44	169	0.38%			169	99.81%
45	86	0.19%			86	100%
	35181	78.71%	9518	21.29%	44699	100%

24 Retake candidates only (R): distribution of points totals May 2009

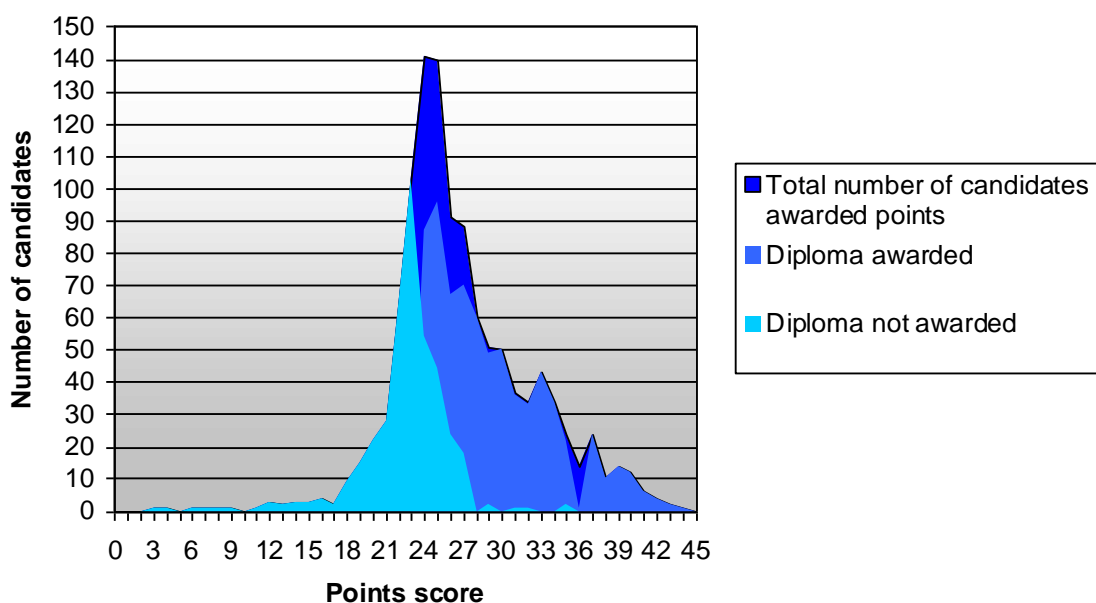
Total Points	Diploma awarded		Diploma not awarded		Total number of candidates awarded each points score	Cumulative
	Number of candidates	Percentage of candidates	Number of candidates	Percentage of candidates		
0						0.00%
1						0.00%
2						0.00%
3			1	0.09%	1	0.09%
4			1	0.09%	1	0.17%
5						0.17%
6			1	0.09%	1	0.26%
7			1	0.09%	1	0.35%
8			1	0.09%	1	0.44%
9			1	0.09%	1	0.52%
10						0.52%
11			1	0.09%	1	0.61%
12			3	0.26%	3	0.87%
13			2	0.17%	2	1.05%
14			3	0.26%	3	1.31%
15			3	0.26%	3	1.57%
16			4	0.35%	4	1.92%
17			2	0.17%	2	2.09%
18			9	0.78%	9	2.87%
19			15	1.31%	15	4.18%
20			22	1.92%	22	6.10%
21			28	2.44%	28	8.54%
22			67	5.84%	67	14.37%
23			103	8.97%	103	23.34%
24	87	7.58%	54	4.70%	141	35.63%
25	96	8.36%	44	3.83%	140	47.82%
26	67	5.84%	24	2.09%	91	55.75%
27	70	6.10%	18	1.57%	88	63.41%
28	60	5.23%			60	68.64%
29	49	4.27%	2	0.17%	51	73.08%
30	50	4.36%			50	77.44%
31	36	3.14%	1	0.09%	37	80.66%
32	33	2.87%	1	0.09%	34	83.62%
33	43	3.75%			43	87.37%
34	34	2.96%			34	90.33%
35	22	1.92%	2	0.17%	24	92.42%
36	14	1.22%			14	93.64%
37	24	2.09%			24	95.73%
38	10	0.87%			10	96.60%
39	14	1.22%			14	97.82%
40	12	1.05%			12	98.87%
41	6	0.52%			6	99.39%
42	4	0.35%			4	99.74%
43	2	0.17%			2	99.91%
44	1	0.09%			1	100.00%
45						100%
	734	63.94%	414	36.06%	1148	100%

25 Diploma score distribution: diploma and retake candidates (D+R) and retake candidates only (R) May 2009

Graph 25.1 Number of diploma and retake candidates with diplomas awarded and diplomas not awarded per points score May 2009



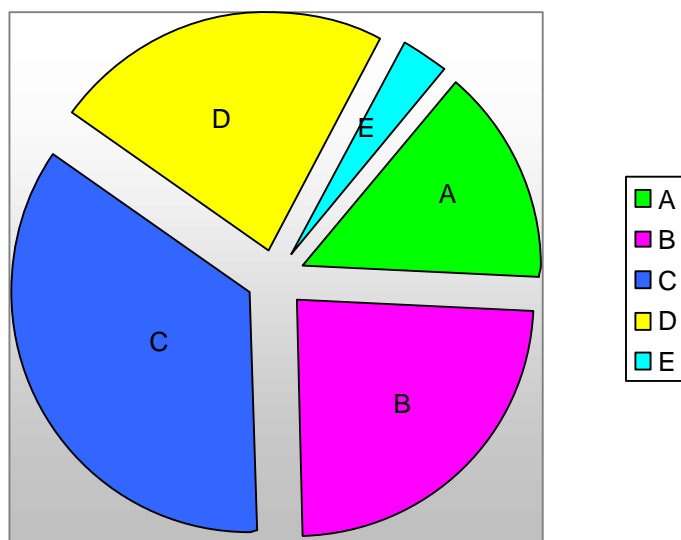
Graph 25.2 Number of retake candidates only with diplomas awarded and diplomas not awarded per points score May 2009



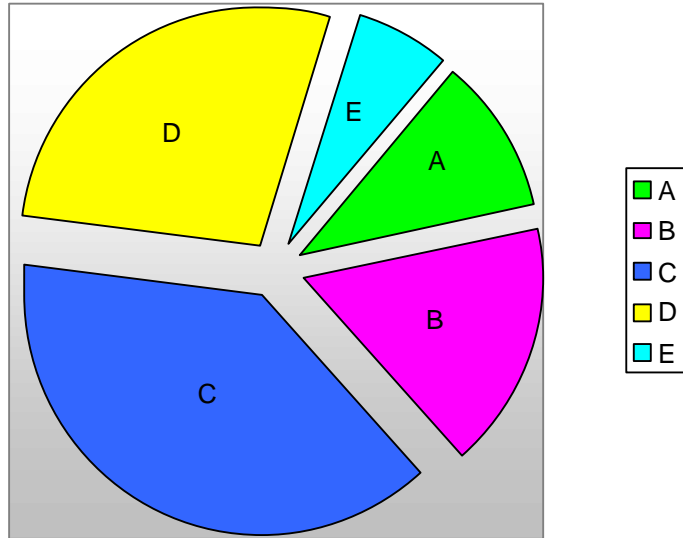
26 Extended essay results May 2009

EE grade awarded per subject group	A	B	C	D	E	Total of candidates awarded grade	Total of all registered candidates	Percentage of candidates awarded grade
Group 1	1,539	2,054	2,302	1,079	77	7,051	7,106	99.23%
Group 2	548	683	901	362	17	2,511	2,526	99.41%
Group 3	2,719	5,094	8,134	5,824	923	22,694	22,895	99.12%
Group 4	649	1,338	2,475	1,904	334	6,700	6,746	99.32%
Group 5	142	253	390	287	50	1,122	1,132	99.12%
Group 6	711	809	1,055	621	56	3,252	3,287	98.94%
PS	91	163	203	81	10	548	551	99.46%
Total	6,399	10,394	15,460	10,158	1,467			
Percentage of candidates awarded a particular grade	14.58%	23.69%	35.23%	23.15%	3.34%	43,878	44,243	99.18%

Graph 26.1 Percentage of grades awarded: extended essay May 2009



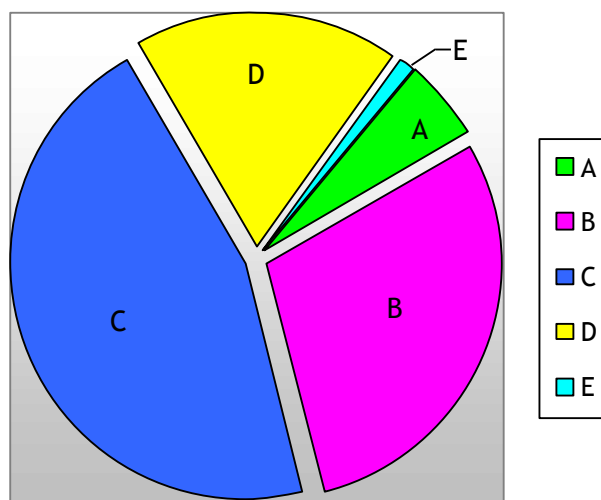
Graph 26.2 Percentage of grades awarded: extended essay May 2008



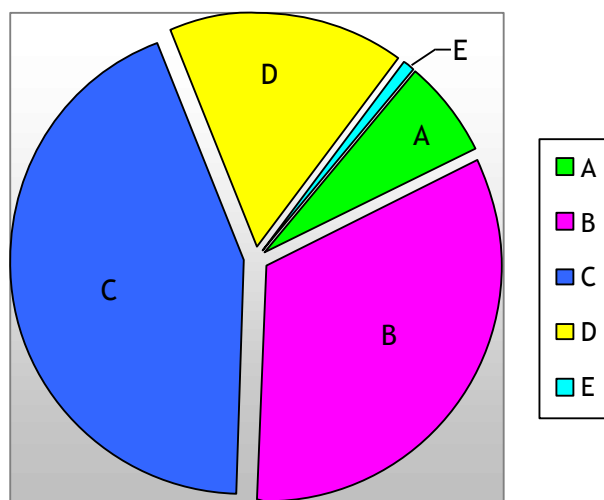
27 Theory of knowledge results May 2009

TOK grade awarded	A	B	C	D	E	Total of candidates awarded grade	Total of all registered candidates	Percentage of candidates awarded grade
Number of candidates awarded grade	2,405	12,753	19,860	7,931	513	43,462	44,202	98.33%
Percentage of candidates awarded grade	5.53%	29.34%	45.70%	18.25%	1.18%			

Graph 27.1 Percentage of grades awarded: theory of knowledge May 2009



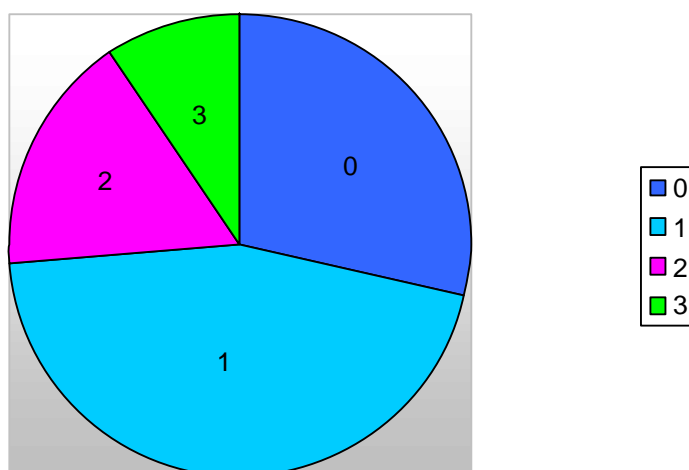
Graph 27.2 Percentage of grades awarded: theory of knowledge May 2008



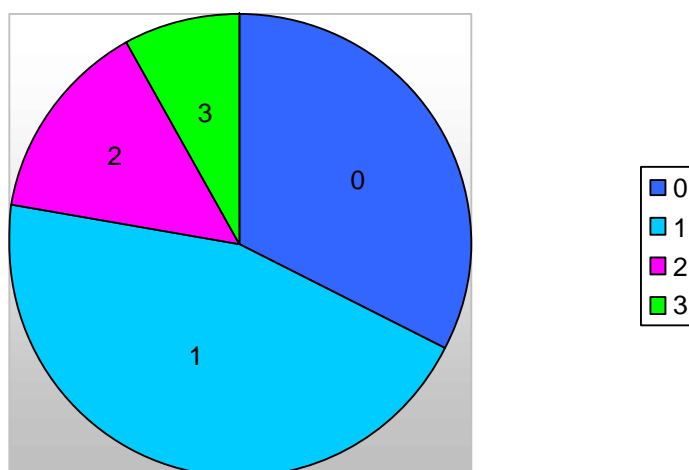
28 Distribution of additional points May 2005–May 2009

Additional points		0	1	2	3	Total	Mean points
May 2005	Number of candidates awarded	7,884	12,478	4,329	2,683	27,374	1.07
	Percentage of candidates awarded	28.80%	45.58%	15.81%	9.80%	100.00%	
May 2006	Number of candidates awarded	9,714	14,132	4,873	2,734	31,453	1.02
	Percentage of candidates awarded	30.88%	44.93%	15.49%	8.69%	100.00%	
May 2007	Number of candidates awarded	11,115	15,976	5,296	2,862	35,249	1.00
	Percentage of candidates awarded	31.53%	45.32%	15.02%	8.12%	100.00%	
May 2008	Number of candidates awarded	12,715	17,739	5,556	3,169	39,179	0.98
	Percentage of candidates awarded	32.45%	45.28%	14.18%	8.09%	100.00%	
May 2009	Number of candidates awarded	12,671	19,852	7,512	4,210	44,245	1.07
	Percentage of candidates awarded	28.64%	44.87%	16.98%	9.52%	100.00%	

Graph 28.1 Distribution of additional points May 2009



Graph 28.2 Distribution of additional points May 2008



29 Mean points score worldwide May 2005–May 2009

Mean score per examination session	May 2005	May 2006	May 2007	May 2008	May 2009
	30.09	29.89	29.56	29.57	29.51

30 Mean grade worldwide May 2005–May 2009

Mean grade per examination session	May 2005	May 2006	May 2007	May 2008	May 2009
	4.78	4.74	4.68	4.69	4.66

31 Pass rate worldwide May 2005–May 2009

Pass rate per examination session	May 2005	May 2006	May 2007	May 2008	May 2009
	81.40%	80.35%	78.78%	79.02%	78.71%

32 Number of diplomas and bilingual diplomas awarded May 2005–May 2009

Examination session	Number of bilingual diplomas awarded	Number of all diplomas awarded (includes bilingual diplomas)	Percentage of bilingual diplomas out of all diplomas awarded
May 2005	7,076	22,564	31.36%
May 2006	7,909	25,601	30.89%
May 2007	8,609	28,078	30.66%
May 2008	9,721	31,285	31.07%
May 2009	10,930	35,181	31.07%

33 Number of diplomas awarded by IB region May 2009

Number of bilingual diplomas awarded	IBAEM	IBAP	IBA	Total
	6,794	2,012	2,124	10,930
Number of all diplomas awarded (includes bilingual diplomas)	13,255	5,439	16,486	35,180

34 Number of Candidates scoring 45 points May 1999-May 2009

Candidates scoring 45	May 1999	May 2000	May 2001	May 2002	May 2003	May 2004	May 2005	May 2006	May 2007	May 2008	May 2009
	28	29	35	40	49	53	68	88	65	75	86

Graph 34.1 Number of candidates scoring 45 points May 1999 - May 2009

